

## Product datasheet for **AM50096PU-N**

### Cathepsin Z (CTSZ) Mouse Monoclonal Antibody [Clone ID: AT6G11]

#### Product data:

Product Type:	Primary Antibodies
Clone Name:	AT6G11
Applications:	ELISA, WB
Recommended Dilution:	The antibody has been tested by ELISA, Western blot analysis to assure specificity and reactivity. Since application varies, however, each investigation should be titrated by the reagent to obtain optimal results. Recommended starting dilution is 1:1000.
Reactivity:	Human
Host:	Mouse
Isotype:	IgG2b
Clonality:	Monoclonal
Immunogen:	Recombinant human CTSZ (62-303aa) purified from E. coli.
Formulation:	PBS, pH 7.4 containing 0.02% Sodium Azide and 10% Glycerol State: Purified State: Liquid purified Ig fraction
Concentration:	lot specific
Purification:	Protein-A affinity chromatography
Conjugation:	Unconjugated
Storage:	Store undiluted at 2-8°C for up to two weeks or (in aliquots) at -20°C for longer. Avoid repeated freezing and thawing.
Stability:	Shelf life: one year from despatch.
Gene Name:	cathepsin Z
Database Link:	<a href="#">Entrez Gene 1522 Human Q9UBR2</a>
Background:	CTSZ (Cathepsin Z), also known as Cathepsin X and Cathepsin P, is 303 amino acid protein. It is lysosomal cysteine proteinase and member of the peptidase C1 family. It exhibits carboxy-monopeptidase as well as carboxy-dipeptidase activity. This gene is widely expressed in cancer cell lines, primary tumors. CTSZ may be involved in tumor progression. And, CTSZ plays a role in normal intracellular protein degradation



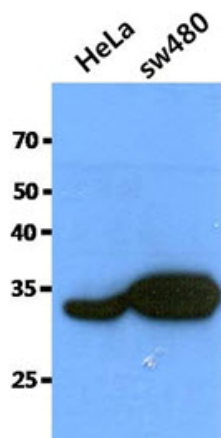
[View online »](#)

**Synonyms:** Cathepsin X, Cathepsin P, CTSZ

**Protein Families:** Druggable Genome, Protease

**Protein Pathways:** Lysosome

**Product images:**



The cell lysates of HeLa (40ug) and SW480 (40ug) were resolved by SDS-PAGE, transferred to PVDF membrane and probed with anti-human CTSZ antibody (1:1000). Proteins were visualized using a goat anti-mouse secondary antibody conjugated to HRP and an ECL detection system.