

Product datasheet for **AM50094PU-S**

CKAP1 (TBCB) Mouse Monoclonal Antibody [Clone ID: AT1F6]

Product data:

Product Type:	Primary Antibodies
Clone Name:	AT1F6
Applications:	ELISA, WB
Recommended Dilution:	ELISA. Western blot. <i>Recommended Starting Dilutions: 1/1500.</i>
Reactivity:	Human
Host:	Mouse
Isotype:	IgG2b
Clonality:	Monoclonal
Immunogen:	Recombinant human TBCB (1-244aa) purified from E. coli.
Specificity:	This antibody recognizes Human CKAP1 / TBCB. Other species not tested.
Formulation:	PBS, pH 7.4 containing 0.02% Sodium Azide and 10% Glycerol State: Purified State: Liquid purified Ig fraction
Concentration:	lot specific
Purification:	Protein-A affinity chromatography
Conjugation:	Unconjugated
Storage:	Store undiluted at 2-8°C for up to two weeks or (in aliquots) at -20°C for longer. Avoid repeated freezing and thawing.
Stability:	Shelf life: one year from despatch.
Gene Name:	tubulin folding cofactor B
Database Link:	Entrez Gene 1155 Human Q99426



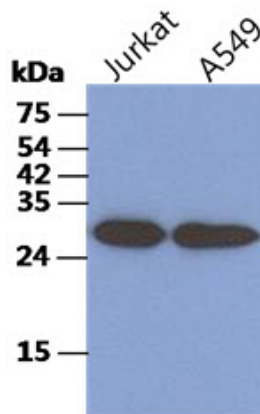
[View online »](#)

Background:

Tubulin folding cofactor B, also known as TBCB, belongs to the Microtubules family. Biosynthesis of functional microtubules involve the participation of several chaperones, termed Tubulin folding cofactors A (TBCA), B (TBCB), D (TBCE), E (TBCE) and C (TBCC), that act on folding intermediates downstream of the cytosolic chaperon, alternatively named TCP. TBCB is a 244 amino acid cytoplasmic protein containing one CAP-Gly domain and is widely expressed. TBCB is involved in the regulation of tubulin heterodimer dissociation and may function as a negative regulator of axonal growth.

Synonyms:

CG22, CKAPI

Product images:

The cell lysates of Jurkat (40ug) and A549 (40ug) were resolved by SDS-PAGE, transferred to PVDF membrane and probed with anti-human TBCB antibody (1:1500). Proteins were visualized using a goat anti-mouse secondary antibody conjugated to HRP and an ECL detection system.