

Product datasheet for **AM50092PU-N**

COTL1 Mouse Monoclonal Antibody [Clone ID: AT1D6]

Product data:

Product Type:	Primary Antibodies
Clone Name:	AT1D6
Applications:	ELISA, WB
Recommended Dilution:	ELISA. Western blot. <i>Recommended Starting Dilutions: 1/1000.</i>
Reactivity:	Human
Host:	Mouse
Isotype:	IgG2b
Clonality:	Monoclonal
Immunogen:	Recombinant human COTL1 (1-142aa) purified from E. coli.
Specificity:	This antibody recognizes Human COTL1 (coactosin-like 1). Other species not tested.
Formulation:	PBS, pH 7.4 containing 0.02% Sodium Azide and 10% Glycerol State: Purified State: Liquid purified Ig fraction
Concentration:	lot specific
Purification:	Protein-A affinity chromatography
Conjugation:	Unconjugated
Storage:	Store undiluted at 2-8°C for up to two weeks or (in aliquots) at -20°C for longer. Avoid repeated freezing and thawing.
Stability:	Shelf life: one year from despatch.
Gene Name:	coactosin like F-actin binding protein 1
Database Link:	Entrez Gene 23406 Human Q14019



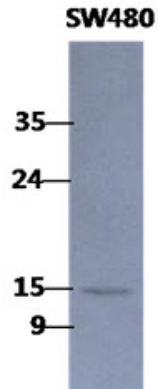
[View online »](#)

Background:

COTL1 (coactosin-like 1), also known as CLP, is a 142 amino acid cytoplasmic and cytoskeletal protein that belongs to the actin-binding proteins ADF family and coactosin subfamily. COTL1 is first identified in slime mold and is found at highest levels in kidney, placenta, lung and peripheral blood leukocytes. COTL1 is one of many proteins that participate in regulation of Actin's cytoskeleton through a calcium dependent mechanism, but has not been shown to have a direct effect on Actin depolymerization.

Synonyms:

COTL1, CLP

Product images:

The cell lysates of SW480 (40ug) were resolved by SDS-PAGE, transferred to PVDF membrane and probed with anti-human COTL1 antibody (1:1000). Proteins were visualized using a goat anti-mouse secondary antibody conjugated to HRP and an ECL detection system.