

Product datasheet for **AM50089PU-N**

KDM5C (C-term) Mouse Monoclonal Antibody

Product data:

Product Type:	Primary Antibodies
Applications:	IF, IHC, WB
Recommended Dilution:	Immunocytochemistry. Immunofluorescence. Immunohistochemistry on Paraffin Sections: 1/50. Western Blot: 1/1000.
Reactivity:	Bovine, Canine, Human, Mouse, Rat
Host:	Mouse
Clonality:	Monoclonal
Immunogen:	Synthetic peptide from C-Terminus of Human KDM5C. Epitope: C-terminus.
Specificity:	This antibody recognizes KDM5C at C-term.
Formulation:	0.1M Tris-Glycine, pH 7.4, 150 mM NaCl, 0.2% Sodium Azide, 50% Glycerol State: Purified State: Liquid purified IgG fraction
Concentration:	lot specific
Purification:	Affinity Chromatography
Conjugation:	Unconjugated
Storage:	Store undiluted at 2-8°C for one month or (in aliquots) at -20°C for longer. Avoid repeated freezing and thawing.
Stability:	Shelf life: one year from despatch.
Gene Name:	lysine demethylase 5C
Database Link:	Entrez Gene 8242 Human P41229



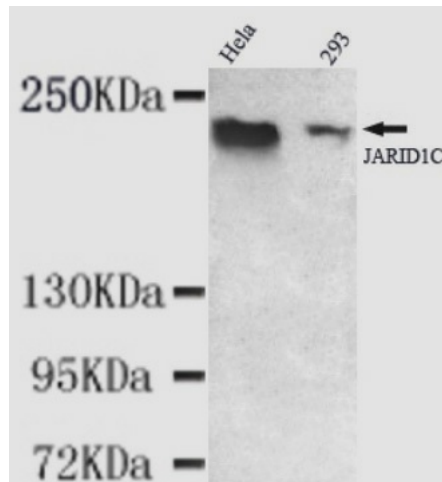
[View online »](#)

Background:

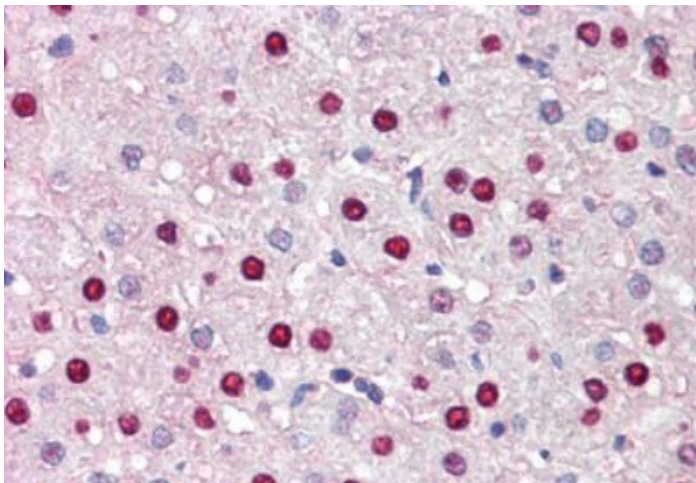
This gene is a member of the SMCY homolog family and encodes a protein with one ARID domain, one JmjC domain, one JmjN domain and two PHD-type zinc fingers. The DNA-binding motifs suggest this protein is involved in the regulation of transcription and chromatin remodeling. Mutations in this gene have been associated with X-linked mental retardation. Alternatively spliced variants that encode different protein isoforms have been described but the full-length nature of only one has been determined. [provided by RefSeq]

Synonyms:

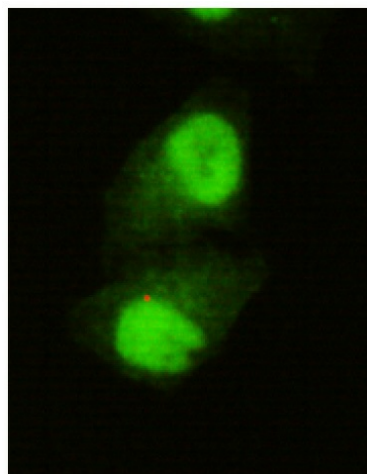
Lysine-specific demethylase 5C, KDM5C, SMCX, XE169, DXS1272E

Product images:


Western Blot using JARID1C Antibody at 1/1000 dilution: Lane 1: HeLa whole cell lysate 40 ug/Lane, Lane 2: 293 whole cell lysate 40 ug/Lane.



Formalin-Fixed, Paraffin-Embedded Human Liver stained with JARID1C Antibody



Immunocytochemistry of HeLa cells using with JARID1C Antibody (1/150).