

## Product datasheet for **AM50079PU-N**

### delta Sarcoglycan (SGCD) Mouse Monoclonal Antibody [Clone ID: AT19G8]

#### Product data:

|                       |   |
|-----------------------|---|
| Product Type:         | Primary Antibodies  |
| Clone Name:           | AT19G8  |
| Applications:         | ELISA, WB   |
| Recommended Dilution: | The antibody has been tested by ELISA, Western blot analysis to assure specificity and reactivity. Since application varies, however, each investigation should be titrated by the reagent to obtain optimal results.<br><i>Recommended Starting Dilutions: 1/1000.</i> |
| Reactivity:           | Human   |
| Host:                 | Mouse   |
| Isotype:              | IgG1  |
| Clonality:            | Monoclonal  |
| Immunogen:            | Recombinant human SGCD (57-289aa) purified from E. coli   |
| Formulation:          | PBS, pH 7.4 containing 0.02% Sodium Azide and 10% Glycerol<br>State: Purified<br>State: Liquid purified Ig fraction   |
| Concentration:        | lot specific  |
| Purification:         | Protein-A affinity chromatography   |
| Conjugation:          | Unconjugated  |
| Storage:              | Store undiluted at 2-8°C for up to two weeks or (in aliquots) at -20°C for longer.<br>Avoid repeated freezing and thawing.  |
| Stability:            | Shelf life: one year from despatch.   |
| Gene Name:            | sarcoglycan delta   |
| Database Link:        | <a href="#">Entrez Gene 6444 Human Q92629</a>   |



[View online »](#)

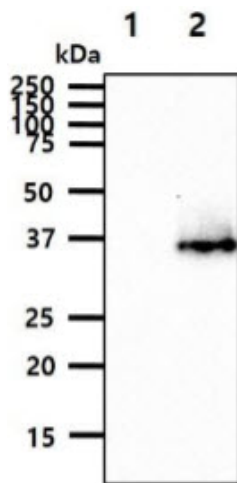
**Background:** SGCD is one of the four known components of the sarcoglycan complex, which is a subcomplex of the dystrophin-glycoprotein complex (DGC). DGC forms a link between the F-actin cytoskeleton and the extracellular matrix. It is expressed most abundantly in skeletal and cardiac muscle. Mutations in this gene have been associated with autosomal recessive limb-girdle muscular dystrophy and dilated cardiomyopathy. Alternatively spliced transcript variants encoding distinct isoforms have been observed for this gene.

**Synonyms:** SGCD, 35DAG

**Protein Families:** Transmembrane

**Protein Pathways:** Arrhythmogenic right ventricular cardiomyopathy (ARVC), Dilated cardiomyopathy, Hypertrophic cardiomyopathy (HCM), Viral myocarditis

**Product images:**



The cell lysates (40ug) were resolved by SDS-PAGE, transferred to PVDF membrane and probed with anti-human SGCD antibody AM50079PU-N (1:1000). Proteins were visualized using a goat anti-mouse secondary antibody conjugated to HRP and an ECL detection system. Lane 1.: 293T cell lysate Lane 2.: SGCD transfected 293T cell lysate