

Product datasheet for **AM50074PU-S**

cleavage stimulation factor (CSTF1) Mouse Monoclonal Antibody [Clone ID: AT10E11]

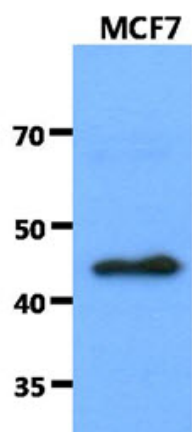
Product data:

| | |
|-----------------------|--|
| Product Type: | Primary Antibodies |
| Clone Name: | AT10E11 |
| Applications: | ELISA, WB |
| Recommended Dilution: | The antibody has been tested by ELISA, Western blot analysis to assure specificity and reactivity. Since application varies, however, each investigation should be titrated by the reagent to obtain optimal results. Recommended starting dilution is 1:1000. |
| Reactivity: | Human |
| Host: | Mouse |
| Isotype: | IgG2b |
| Clonality: | Monoclonal |
| Immunogen: | Recombinant human CSTF1 (1-431aa) purified from E. coli |
| Formulation: | PBS, pH 7.4 containing 0.02% Sodium Azide and 10% Glycerol State: Purified State: Liquid purified Ig fraction |
| Concentration: | lot specific |
| Purification: | Protein-A affinity chromatography |
| Conjugation: | Unconjugated |
| Storage: | Store undiluted at 2-8°C for up to two weeks or (in aliquots) at -20°C for longer. Avoid repeated freezing and thawing. |
| Stability: | Shelf life: one year from despatch. |
| Gene Name: | cleavage stimulation factor subunit 1 |
| Database Link: | Entrez Gene 1477 Human Q05048 |
| Background: | CSTF1, also known as cleavage stimulation factor subunit 1, is 431 amino acid protein. It is involved in the polyadenylation and 3 end cleavage of pre-mRNAs. CSTF1 may be responsible for the interaction of CSTF with other factors to form a stable complex on the pre-mRNA. Similar to mammalian G protein beta subunits, this protein contains transducin-like repeats. |
| Synonyms: | CF-1 50 kDa subunit, CstF-50, CstFp50, CSTF 50 kDa subunit |



[View online »](#)

Product images:



The cell lysates of MCF7 (40ug) were resolved by SDS-PAGE, transferred to PVDF membrane and probed with anti-human CSTF1 antibody (1:1000). Proteins were visualized using a goat anti-mouse secondary antibody conjugated to HRP and an ECL detection system.