

## Product datasheet for **AM50069PU-N**

### PCBP1 Mouse Monoclonal Antibody [Clone ID: AT2A10]

#### Product data:

Product Type:	Primary Antibodies
Clone Name:	AT2A10
Applications:	ELISA, WB
Recommended Dilution:	The antibody has been tested by ELISA, Western blot analysis to assure specificity and reactivity. Since application varies, however, each investigation should be titrated by the reagent to obtain optimal results. Recommended starting dilution is 1:500.
Reactivity:	Human
Host:	Mouse
Isotype:	IgG2a
Clonality:	Monoclonal
Immunogen:	Recombinant human PCBP1 (1-163aa) purified from E. coli
Formulation:	PBS, pH 7.4 containing 0.02% Sodium Azide and 10% Glycerol State: Purified State: Liquid purified Ig fraction
Concentration:	lot specific
Purification:	Protein-A affinity chromatography
Conjugation:	Unconjugated
Storage:	Store undiluted at 2-8°C for up to two weeks or (in aliquots) at -20°C for longer. Avoid repeated freezing and thawing.
Stability:	Shelf life: one year from despatch.
Gene Name:	poly(rC) binding protein 1
Database Link:	<a href="#">Entrez Gene 5093 Human Q15365</a>
Background:	PCBP-1 and PCBP-2 have paralogues (PCBP3 and PCBP4) which are thought to have arisen as a result of duplication events of entire genes. PCBP1 constitutes a set of polypeptides that contribute to mRNA transcription, pre-mRNA processing as well as mature mRNA transport to the cytoplasm and translation. It has also been implicated in translational control of the 15-lipoxygenase mRNA, human Papillomavirus type 16 L2 mRNA, and hepatitis A virus RNA.

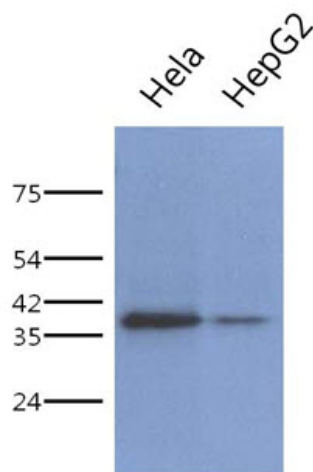


[View online »](#)

**Synonyms:** hnRNP E1, HNRPE1, HNRPX, Alpha-CP1, SUB2.3

**Protein Pathways:** Spliceosome

**Product images:**



The lysate of HeLa (40ug) and HepG2 (40ug) were resolved by SDS-PAGE, transferred to PVDF membrane and probed with anti-human PCBP1 antibody (1:500). Proteins were visualized using a goat anti-mouse secondary antibody conjugated to HRP and an ECL detection system.