

## Product datasheet for **AM50067PU-N**

### ITLN1 Mouse Monoclonal Antibody [Clone ID: AT6C11]

#### Product data:

Product Type:	Primary Antibodies
Clone Name:	AT6C11
Applications:	ELISA, WB
Recommended Dilution:	The antibody has been tested by ELISA, Western blot analysis to assure specificity and reactivity. Since application varies, however, each investigation should be titrated by the reagent to obtain optimal results. <b>Recommended Starting Dilution:</b> 1/250.
Reactivity:	Human
Host:	Mouse
Isotype:	IgG1
Clonality:	Monoclonal
Immunogen:	Recombinant human ITLN1 (17-313aa) purified from E. coli
Formulation:	PBS, pH 7.4 containing 0.02% Sodium Azide and 10% Glycerol State: Purified State: Liquid purified Ig fraction
Concentration:	lot specific
Purification:	Affinity Chromatography on Protein A
Conjugation:	Unconjugated
Storage:	Store undiluted at 2-8°C for up to two weeks or (in aliquots) at -20°C for longer. Avoid repeated freezing and thawing.
Stability:	Shelf life: one year from despatch.
Gene Name:	intelectin 1
Database Link:	<a href="#">Entrez Gene 55600 Human Q8WWA0</a>



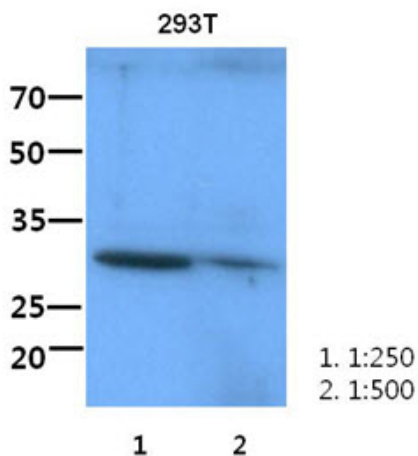
[View online »](#)

**Background:** ITLN1, also known as intelectin1 or omentin, has no effect on basal glucose uptake but enhances insulin-stimulated glucose uptake in adipocytes. ITLN1 may play a role in the defense system against microorganisms and specifically recognize carbohydrate chains of pathogens and bacterial components containing galactofuranosyl residues, in a calcium-dependent manner.

**Synonyms:** ITLN-1, ITLN1, INTL, ITLN, LFR, Endothelial lectin HL-1

**Protein Families:** Druggable Genome, Secreted Protein

### Product images:



The lysate of 293T (60ug) were resolved by SDS-PAGE, transferred to PVDF membrane and probed with anti-human ITLN1 antibody (1:250-1:500). Proteins were visualized using a goat anti-mouse secondary antibody conjugated to HRP and an ECL detection system.