

## Product datasheet for **AM50066PU-S**

### **BMP2 Mouse Monoclonal Antibody [Clone ID: AT15B3]**

#### **Product data:**

Product Type: Primary Antibodies

Clone Name: AT15B3

Applications: ELISA, IF, WB

Recommended Dilution: **ELISA.**

**Immunocytochemistry/Immunofluorescence.**

**Western blot / Immunoblot.**

The antibody has been tested by ELISA, Western blot analysis to assure specificity and reactivity. Since application varies, however, each investigation should be titrated by the reagent to obtain optimal results. Recommended starting dilution is 1:1000.

Reactivity: Human

Host: Mouse

Isotype: IgG2b

Clonality: Monoclonal

Immunogen: Recombinant human BMP2 (283-396aa) purified from E. coli

Formulation: PBS, pH 7.4 containing 0.02% Sodium Azide and 10% Glycerol

State: Purified

State: Liquid purified Ig fraction

Concentration: lot specific

Purification: Protein-A affinity chromatography

Conjugation: Unconjugated

Storage: Store undiluted at 2-8°C for up to two weeks or (in aliquots) at -20°C for longer.  
Avoid repeated freezing and thawing.

Stability: Shelf life: one year from despatch.

Gene Name: Homo sapiens bone morphogenetic protein 2 (BMP2)

Database Link: [Entrez Gene 650 Human P12643](#)



[View online »](#)

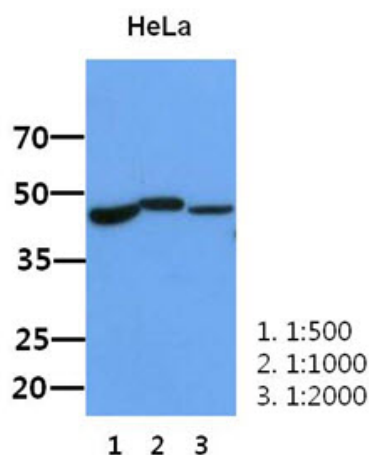
**Background:** BMP-2 (Bone morphogenetic protein 2) is multi-functional growth factors that belong to the transforming growth factor beta (TGF beta) superfamily. It plays an important role in embryonic dorsal-ventral patterning, organogenesis, limb bud formation, and bone formation and regeneration. BMP-2 also promotes the maintenance and repair of colonic epithelium, suppresses neuronal dopamine synthesis and release, induces apoptosis in medulloblastoma cells, and is required for cardiac contractility.

**Synonyms:** Bone morphogenetic protein 2, BMP-2, BMP-2A

**Protein Families:** Adult stem cells, Cancer stem cells, Druggable Genome, Embryonic stem cells, ES Cell Differentiation/IPS, Induced pluripotent stem cells, Secreted Protein, Stem cell relevant signaling - TGFb/BMP signaling pathway, Transmembrane

**Protein Pathways:** Acute myeloid leukemia, Basal cell carcinoma, Cytokine-cytokine receptor interaction, Endocytosis, Hedgehog signaling pathway, Hematopoietic cell lineage, Melanogenesis, Pathways in cancer, TGF-beta signaling pathway

### Product images:



The lysate of HeLa (30ug) were resolved by SDS-PAGE, transferred to PVDF membrane and probed with anti-human BMP2 antibody (1:500-1:2000). Proteins were visualized using a goat anti-mouse secondary antibody conjugated to HRP and an ECL detection system.