

Product datasheet for **AM50063PU-S**

PPM1F Mouse Monoclonal Antibody [Clone ID: AT6D11]

Product data:

Product Type:	Primary Antibodies
Clone Name:	AT6D11
Applications:	ELISA, WB
Recommended Dilution:	The antibody has been tested by ELISA, Western blot analysis to assure specificity and reactivity. Since application varies, however, each investigation should be titrated by the reagent to obtain optimal results. Recommended starting dilution is 1:1000.
Reactivity:	Human
Host:	Mouse
Isotype:	IgG1
Clonality:	Monoclonal
Immunogen:	Recombinant human PPM1F (1-454aa) purified from E. coli
Formulation:	PBS, pH 7.4 containing 0.02% Sodium Azide and 10% Glycerol State: Purified State: Liquid purified Ig fraction
Concentration:	lot specific
Purification:	Protein-A affinity chromatography
Conjugation:	Unconjugated
Storage:	Store undiluted at 2-8°C for up to two weeks or (in aliquots) at -20°C for longer. Avoid repeated freezing and thawing.
Stability:	Shelf life: one year from despatch.
Gene Name:	protein phosphatase, Mg ²⁺ /Mn ²⁺ dependent 1F
Database Link:	Entrez Gene 9647 Human P49593



[View online »](#)

Background:

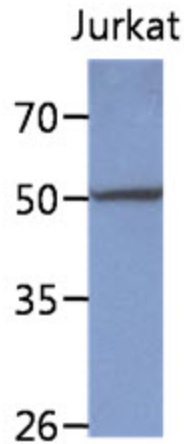
PPM1F is a member of the PP2C family of Ser/Thr protein phosphatases. PP2C family members are known to be negative regulators of cell stress response pathways. This phosphatase can interact with Rho guanine nucleotide exchange factors (PIX), and thus block the effects of p21-activated kinase 1 (PAK), a protein kinase mediating biological effects downstream of Rho GTPases. Calcium/calmodulin-dependent protein kinase II gamma (CAMK2G/CAMK-II) is found to be one of the substrates of this phosphatase. The overexpression of this phosphatase or CAMK2G has been shown to mediate caspase-dependent apoptosis. An alternatively spliced transcript variant has been identified, but its full-length nature has not been determined.

Synonyms:

KIAA0015, POPX2, Partner of PIX 2, Protein fem-2 homolog, CaM-kinase phosphatase, CaMKPase

Protein Families:

Druggable Genome, Phosphatase

Product images:

The lysate of Jurkat (40ug) were resolved by SDS-PAGE, transferred to PVDF membrane and probed with anti-human PPM1F antibody (1:1000). Proteins were visualized using a goat anti-mouse secondary antibody conjugated to HRP and an ECL detection system.