

Product datasheet for **AM50062PU-N**

SSR2 Mouse Monoclonal Antibody [Clone ID: AT31G6]

Product data:

Product Type:	Primary Antibodies
Clone Name:	AT31G6
Applications:	ELISA, WB
Recommended Dilution:	The antibody has been tested by ELISA, Western blot analysis to assure specificity and reactivity. Since application varies, however, each investigation should be titrated by the reagent to obtain optimal results. Recommended starting dilution is 1:500.
Reactivity:	Human
Host:	Mouse
Isotype:	IgG1
Clonality:	Monoclonal
Immunogen:	Recombinant human SSR2 (18-149aa) purified from E. coli
Formulation:	PBS, pH 7.4 containing 0.02% Sodium Azide and 10% Glycerol State: Purified State: Liquid purified Ig fraction
Concentration:	lot specific
Purification:	Protein-A affinity chromatography
Conjugation:	Unconjugated
Storage:	Store undiluted at 2-8°C for up to two weeks or (in aliquots) at -20°C for longer. Avoid repeated freezing and thawing.
Stability:	Shelf life: one year from despatch.
Gene Name:	signal sequence receptor subunit 2
Database Link:	Entrez Gene 6746 Human P43308
Background:	SSR2 belongs to the TRAP-beta family. SSR is a glycosylated endoplasmic reticulum (ER) membrane receptor associated with protein translocation across the ER membrane. TRAP proteins are part of a complex whose function is to bind calcium to the ER membrane and thereby regulate the retention of ER resident proteins. The SSR consists of 2 subunits, a 34kD glycoprotein (alpha-SSR or SSR1) and a 22kD glycoprotein (beta-SSR or SSR2)..

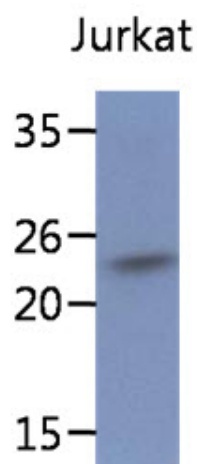


[View online »](#)

Synonyms: SSR-beta, TRAP-beta, TLAP

Protein Families: Druggable Genome, Transmembrane

Product images:



The lysate of Jurkat (40ug) were resolved by SDS-PAGE, transferred to PVDF membrane and probed with anti-human SSR2 antibody (1:500). Proteins were visualized using a goat anti-mouse secondary antibody conjugated to HRP and an ECL detection system.