

Product datasheet for **AM50061PU-N**

Myosin (MYL4) Mouse Monoclonal Antibody [Clone ID: AT4E8]

Product data:

| | |
|-----------------------|--|
| Product Type: | Primary Antibodies |
| Clone Name: | AT4E8 |
| Applications: | ELISA, WB |
| Recommended Dilution: | The antibody has been tested by ELISA, Western blot analysis to assure specificity and reactivity. Since application varies, however, each investigation should be titrated by the reagent to obtain optimal results. Recommended starting dilution is 1:1000. |
| Reactivity: | Human |
| Host: | Mouse |
| Isotype: | IgG2a |
| Clonality: | Monoclonal |
| Immunogen: | Recombinant human MYL4 (1-197aa) purified from E. coli |
| Formulation: | PBS, pH 7.4 containing 0.02% Sodium Azide and 10% Glycerol State: Purified State: Liquid purified Ig fraction |
| Concentration: | lot specific |
| Purification: | Protein-A affinity chromatography |
| Conjugation: | Unconjugated |
| Storage: | Store undiluted at 2-8°C for up to two weeks or (in aliquots) at -20°C for longer. Avoid repeated freezing and thawing. |
| Stability: | Shelf life: one year from despatch. |
| Gene Name: | myosin light chain 4 |
| Database Link: | Entrez Gene 4635 Human P12829 |



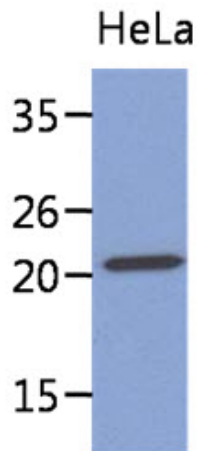
[View online »](#)

Background:

Myosin light chain 4 is a protein that in humans is encoded by the MYL4 gene. Myosin is a hexameric ATPase cellular motor protein. It is composed of two myosin heavy chains, two nonphosphorylatable myosin alkali light chains, and two phosphorylatable myosin regulatory light chains. This gene encodes a myosin alkali light chain that is found in embryonic muscle and adult atria. Two alternatively spliced transcript variants encoding the same protein have been found for this gene.

Synonyms:

Myosin light chain 4, Myosin light chain 1, embryonic muscle/atrial isoform, Myosin light chain alkali, GT-1 isoform, MLC1, PRO1957

Product images:

The lysate of HeLa (40ug) were resolved by SDS-PAGE, transferred to PVDF membrane and probed with anti-human MYL4 antibody (1:1000). Proteins were visualized using a goat anti-mouse secondary antibody conjugated to HRP and an ECL detection system.