

Product datasheet for **AM50060PU-S**

FKBP6 Mouse Monoclonal Antibody [Clone ID: AT9B7]

Product data:

Product Type:	Primary Antibodies
Clone Name:	AT9B7
Applications:	ELISA, WB
Recommended Dilution:	The antibody has been tested by ELISA, Western blot analysis to assure specificity and reactivity. Since application varies, however, each investigation should be titrated by the reagent to obtain optimal results. Recommended starting dilution is 1:1000.
Reactivity:	Human
Host:	Mouse
Isotype:	IgG1
Clonality:	Monoclonal
Immunogen:	Recombinant human FKBP6 (1-327aa) purified from E. coli
Formulation:	PBS, pH 7.4 containing 0.02% Sodium Azide and 10% Glycerol State: Purified State: Liquid purified Ig fraction
Concentration:	lot specific
Purification:	Protein-A affinity chromatography
Conjugation:	Unconjugated
Storage:	Store undiluted at 2-8°C for up to two weeks or (in aliquots) at -20°C for longer. Avoid repeated freezing and thawing.
Stability:	Shelf life: one year from despatch.
Gene Name:	FK506 binding protein 6
Database Link:	Entrez Gene 8468 Human O75344



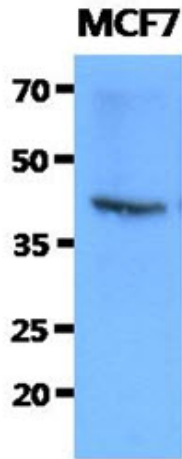
[View online »](#)

Background:

FKBP6 (FK506 binding protein 6) is a 327 amino acid protein. FKBP6 is a member of the immunophilin protein family, which play a role in immunoregulation and basic cellular processes involving protein folding and trafficking. FKBP6 is essential for homologous chromosome pairing in meiosis during spermatogenesis. FKBP6 is ubiquitously expressed in all tissues, with higher expressed in testis, heart, skeletal muscle, liver, and kidney. Deletion of FKBP6 may contribute to hypercalcemia and growth delay in Williams-Beuren syndrome.

Synonyms:

FKBP-6, FKBP-36

Product images:

The cell lysates of MCF7 (40ug) were resolved by SDS-PAGE, transferred to PVDF membrane and probed with anti-human FKBP6 antibody (1:1000). Proteins were visualized using a goat anti-mouse secondary antibody conjugated to HRP and an ECL detection system.