

## Product datasheet for **AM50057PU-N**

### CDK4 Mouse Monoclonal Antibody [Clone ID: AT6D10]

#### Product data:

Product Type:	Primary Antibodies
Clone Name:	AT6D10
Applications:	ELISA, WB
Recommended Dilution:	The antibody has been tested by ELISA, Western blot analysis to assure specificity and reactivity. Since application varies, however, each investigation should be titrated by the reagent to obtain optimal results. Recommended starting dilution is 1:500.
Reactivity:	Human
Host:	Mouse
Isotype:	IgG2a
Clonality:	Monoclonal
Immunogen:	Recombinant human CDK4 (1-303aa) purified from E. coli
Formulation:	PBS, pH 7.4 containing 0.02% Sodium Azide and 10% Glycerol State: Purified State: Liquid purified Ig fraction
Concentration:	lot specific
Purification:	Protein-A affinity chromatography
Conjugation:	Unconjugated
Storage:	Store undiluted at 2-8°C for up to two weeks or (in aliquots) at -20°C for longer. Avoid repeated freezing and thawing.
Stability:	Shelf life: one year from despatch.
Gene Name:	cyclin-dependent kinase 4
Database Link:	<a href="#">Entrez Gene 1019 Human P11802</a>



[View online »](#)

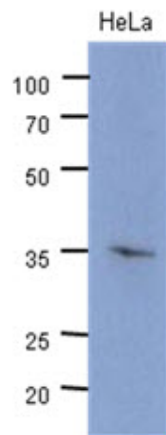
**Background:** Cyclin-dependent kinase 4, also known as CDK4, belongs to the cyclin-dependent kinases (CDK) family. CDKs are a family of protein kinases first discovered for their role in regulating the cell cycle. They are also involved in regulating transcription, mRNA processing, and the differentiation of nerve cells. CDK4, in complex with D-type cyclins, is thought to regulate cell growth during the G1 phase of the cell cycle. This association with a D-type cyclin up-regulates CDK4 activity, whereas binding to the CDK inhibitor p16 down-regulates CDK4 activity.

**Synonyms:** PSK-J3

**Protein Families:** Druggable Genome, Protein Kinase

**Protein Pathways:** Bladder cancer, Cell cycle, Chronic myeloid leukemia, Glioma, Melanoma, Non-small cell lung cancer, p53 signaling pathway, Pancreatic cancer, Pathways in cancer, Small cell lung cancer, T cell receptor signaling pathway, Tight junction

### Product images:



The cell lysate of HeLa (40ug) were resolved by SDS-PAGE, transferred to PVDF membrane and probed with anti-human CDK4 antibody (1:500). Proteins were visualized using a goat anti-mouse secondary antibody conjugated to HRP and an ECL detection system.