

## Product datasheet for **AM50056PU-S**

### CRLF2 Mouse Monoclonal Antibody [Clone ID: AT4E7]

#### Product data:

|                       |  |
|-----------------------|--|
| Product Type:         | Primary Antibodies   |
| Clone Name:           | AT4E7  |
| Applications:         | ELISA, WB  |
| Recommended Dilution: | The antibody has been tested by ELISA, Western blot analysis to assure specificity and reactivity. Since application varies, however, each investigation should be titrated by the reagent to obtain optimal results. Recommended dilution range for Western blot analysis is 1:500 ~ 1:5000. Recommended starting dilution is 1:1000. |
| Reactivity:           | Human  |
| Host:                 | Mouse  |
| Isotype:              | IgG2a  |
| Clonality:            | Monoclonal   |
| Immunogen:            | Recombinant human CRLF2 (23-231aa) purified from E. coli   |
| Formulation:          | PBS, pH 7.4 containing 0.02% Sodium Azide and 10% Glycerol<br>State: Purified<br>State: Liquid purified Ig fraction  |
| Concentration:        | lot specific   |
| Purification:         | Protein-A affinity chromatography  |
| Conjugation:          | Unconjugated   |
| Storage:              | Store undiluted at 2-8°C for up to two weeks or (in aliquots) at -20°C for longer.<br>Avoid repeated freezing and thawing.   |
| Stability:            | Shelf life: one year from despatch.  |
| Gene Name:            | cytokine receptor-like factor 2  |
| Database Link:        | <a href="#">Entrez Gene 64109 Human Q9HC73</a>   |



[View online »](#)

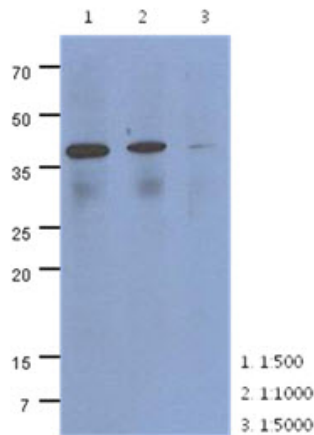
**Background:** CRLF2 is cytokine receptor-like factor 2. Cytokine signals are mediated through specific receptor complexes, the components of which are mostly members of the type I cytokine receptor family. Type I cytokine receptors share conserved structural features in their extracellular domain. Receptor complexes are typically heterodimeric, consisting of alpha chains, which provide ligand specificity, and beta (or gamma) chains, which are required for the formation of high-affinity binding sites and signal transduction.

**Synonyms:** Cytokine receptor-like 2, IL-XR, ILXR, TSLPR

**Protein Families:** Druggable Genome, Secreted Protein, Transmembrane

**Protein Pathways:** Cytokine-cytokine receptor interaction, Jak-STAT signaling pathway

### Product images:



The cell lysate of HeLa (40ug) were resolved by SDS-PAGE, transferred to PVDF membrane and probed with anti-human CRLF2 antibody (1:500 ~ 1:5000). Proteins were visualized using a goat anti-mouse secondary antibody conjugated to HRP and an ECL detection system.