

## Product datasheet for **AM50053PU-S**

### MFAP4 Mouse Monoclonal Antibody [Clone ID: AT12D11]

#### Product data:

Product Type:	Primary Antibodies
Clone Name:	AT12D11
Applications:	ELISA, WB
Recommended Dilution:	The antibody has been tested by ELISA, Western blot analysis to assure specificity and reactivity. Since application varies, however, each investigation should be titrated by the reagent to obtain optimal results. Recommended starting dilution is 1:1000.
Reactivity:	Human
Host:	Mouse
Isotype:	IgG1
Clonality:	Monoclonal
Immunogen:	Recombinant human MFAP4 (22-255aa) purified from E. coli
Formulation:	PBS, pH 7.4 containing 0.02% Sodium Azide and 10% Glycerol State: Purified State: Liquid purified Ig fraction
Concentration:	lot specific
Purification:	Protein-A affinity chromatography
Conjugation:	Unconjugated
Storage:	Store undiluted at 2-8°C for up to two weeks or (in aliquots) at -20°C for longer. Avoid repeated freezing and thawing.
Stability:	Shelf life: one year from despatch.
Gene Name:	microfibrillar associated protein 4
Database Link:	<a href="#">Entrez Gene 4239 Human P55083</a>



[View online »](#)

**Background:**

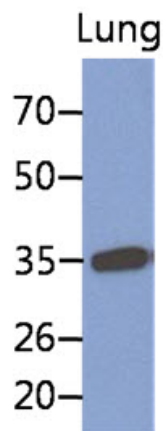
Several microfibril associated proteins (MFAPs) have been cloned, including MFAP1, MFAP3 and MFAP4. The MFAP1 and MFAP3 genes are localized near the fibrillin genes FBN1 and FBN2, respectively. Mutations in FBN1 are linked to Marfan syndrome. Mutations in FBN2 have been linked to congenital contractural arachnodactyly. This suggests roles for MFAP1 and MFAP3 in heritable diseases affecting microfibrils. Deletion of MFAP4 was found in 30 of 31 patients with Smith-Magenis syndrome (SMS), a clinically recognizable multiple congenital anomaly/mental retardation syndrome. Also, MFAP4 play an important role in calcium-dependent cell adhesion or intercellular interactions. These structural features of MFAP4 suggest that it is an extracellular matrix protein involved in cell adhesion or intercellular interactions.

**Synonyms:**

Microfibril-associated glycoprotein 4

**Protein Families:**

Druggable Genome, Secreted Protein

**Product images:**

The extract of lung (30ug) were resolved by SDS-PAGE, transferred to PVDF membrane and probed with anti-human MFAP4 antibody (1:1000). Proteins were visualized using a goat anti-mouse secondary antibody conjugated to HRP and an ECL detection system.