

Product datasheet for **AM50051PU-S**

DIABLO Mouse Monoclonal Antibody [Clone ID: AT19F2]

Product data:

Product Type:	Primary Antibodies
Clone Name:	AT19F2
Applications:	ELISA, WB
Recommended Dilution:	The antibody has been tested by ELISA, Western blot analysis to assure specificity and reactivity. Since application varies, however, each investigation should be titrated by the reagent to obtain optimal results. Recommended starting dilution is 1:3000.
Reactivity:	Human
Host:	Mouse
Isotype:	IgG2a
Clonality:	Monoclonal
Immunogen:	Recombinant human SMAC/Diablo (56-239aa) purified from E. coli
Formulation:	PBS, pH 7.4 containing 0.02% Sodium Azide and 10% Glycerol State: Purified State: Liquid purified Ig fraction
Concentration:	lot specific
Purification:	Protein-A affinity chromatography
Conjugation:	Unconjugated
Storage:	Store undiluted at 2-8°C for up to two weeks or (in aliquots) at -20°C for longer. Avoid repeated freezing and thawing.
Stability:	Shelf life: one year from despatch.
Gene Name:	diablo IAP-binding mitochondrial protein
Database Link:	Entrez Gene 56616 Human Q9NR28



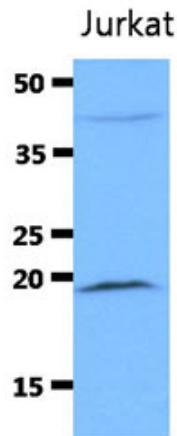
[View online »](#)

Background: SMAC/Diablo is one of the proapoptotic proteins. SMAC promotes caspase activation in the cytochrome c/Apaf-1/caspase-9 pathway by binding to inhibitor of apoptosis proteins (IAPs) and removing their inhibitory activity. In healthy cells, SMAC is a mitochondrial protein, but when cells undergo apoptosis, SMAC is released into the cytosol. SMAC is ubiquitously expressed with highest expression in testis. Expression is also high in heart, liver, kidney, spleen, prostate and ovary. Low in brain, lung, thymus and peripheral blood leukocytes

Synonyms: 0610041G12Rik; DIABLO-S; FLJ10537; FLJ25049; SMAC; SMAC3

Protein Families: Transmembrane

Product images:



The cell lysate of Jurkat (40ug) were resolved by SDS-PAGE, transferred to PVDF membrane and probed with anti-human SMAC antibody (1:3000). Proteins were visualized using a goat anti-mouse secondary antibody conjugated to HRP and an ECL detection system.