

## Product datasheet for **AM50049PU-N**

### Cathepsin S (CTSS) Mouse Monoclonal Antibody [Clone ID: AT1F9]

#### Product data:

Product Type:	Primary Antibodies
Clone Name:	AT1F9
Applications:	ELISA, WB
Recommended Dilution:	The antibody has been tested by <b>ELISA, Western blot</b> analysis to assure specificity and reactivity. Since application varies, however, each investigation should be titrated by the reagent to obtain optimal results. Recommended starting dilution: 1/500.
Reactivity:	Human
Host:	Mouse
Isotype:	IgG2b
Clonality:	Monoclonal
Immunogen:	Recombinant human CTSS (17-331aa) purified from E. coli
Specificity:	This antibody recognizes Human CTSS. Other species not tested.
Formulation:	PBS, pH 7.4 containing 0.02% Sodium Azide and 10% Glycerol State: Purified State: Liquid purified Ig fraction
Concentration:	lot specific
Purification:	Affinity Chromatography on Protein A
Conjugation:	Unconjugated
Storage:	Store undiluted at 2-8°C for up to two weeks or (in aliquots) at -20°C for longer. Avoid repeated freezing and thawing.
Stability:	Shelf life: one year from despatch.
Gene Name:	cathepsin S
Database Link:	<a href="#">Entrez Gene 1520 Human P25774</a>



[View online »](#)

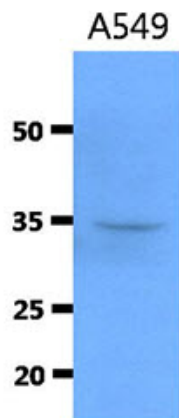
**Background:** CTSS (Cathepsin S) is a lysosomal enzyme that belongs to the papain family of cysteine proteases. This protein is expressed by antigen presenting cells including macrophages, B-lymphocytes, dendritic cells and microglia. Moreover, CTSS is expressed in some epithelial cells. In contrast, cortical thymic epithelial cells do not express CTSS. Normal epidermal keratinocytes do not express CTSS. However, level of CTSS is elevated in psoriatic keratinocytes due to stimulation by proinflammatory factors. CTSS can function as an elastase over a broad pH range in alveolar macrophages.

**Synonyms:** CTSS, Cathepsin-S

**Protein Families:** Druggable Genome, Protease

**Protein Pathways:** Antigen processing and presentation, Lysosome

### Product images:



The cell lysate of A549 (40ug) were resolved by SDS-PAGE, transferred to PVDF membrane and probed with anti-human SMAC antibody (1:500). Proteins were visualized using a goat anti-mouse secondary antibody conjugated to HRP and an ECL detection system.