

Product datasheet for **AM50046PU-S**

CIAO1 Mouse Monoclonal Antibody [Clone ID: AT6C9]

Product data:

Product Type:	Primary Antibodies
Clone Name:	AT6C9
Applications:	ELISA, WB
Recommended Dilution:	The antibody has been tested by ELISA, Western blot analysis to assure specificity and reactivity. Since application varies, however, each investigation should be titrated by the reagent to obtain optimal results. Recommended dilution range for Western blot analysis is 1:500 ~ 1:5000. Recommended starting dilution is 1:1000.
Reactivity:	Human
Host:	Mouse
Isotype:	IgG1
Clonality:	Monoclonal
Immunogen:	Recombinant human CIAO1 (1-339aa) purified from E. coli
Formulation:	PBS, pH 7.4 containing 0.02% Sodium Azide and 10% Glycerol State: Purified State: Liquid purified Ig fraction
Concentration:	lot specific
Purification:	Protein-A affinity chromatography
Conjugation:	Unconjugated
Storage:	Store undiluted at 2-8°C for up to two weeks or (in aliquots) at -20°C for longer. Avoid repeated freezing and thawing.
Stability:	Shelf life: one year from despatch.
Gene Name:	cytosolic iron-sulfur assembly component 1
Database Link:	Entrez Gene 9391 Human O76071



[View online »](#)

Background:

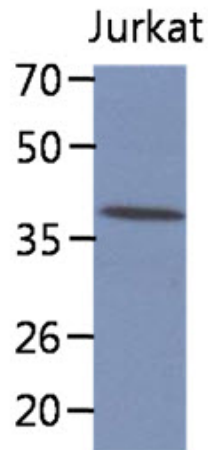
CIAO1 is an essential component of the cytosolic iron-sulfur (Fe/S) protein assembly machinery. It is a multiprotein complex that mediates the incorporation of iron-sulfur cluster into extramitochondrial Fe/S proteins. CIAO1 seems to specifically modulate the transactivation activity of WT1 and may function to regulate the physiological functions of WT1 in cell growth and differentiation. As part of the mitotic spindle-associated MMXD complex, it may play a role in chromosome segregation.

Synonyms:

CIA1; WDR39

Protein Families:

Transcription Factors

Product images:

The cell lysate of Jurkat (30ug) were resolved by SDS-PAGE, transferred to PVDF membrane and probed with anti-human CIAO1 antibody (1:1000). Proteins were visualized using a goat anti-mouse secondary antibody conjugated to HRP and an ECL detection system.