

## Product datasheet for **AM50043PU-N**

### MRPS25 Mouse Monoclonal Antibody [Clone ID: AT38E7]

#### Product data:

Product Type:	Primary Antibodies
Clone Name:	AT38E7
Applications:	ELISA, WB
Recommended Dilution:	The antibody has been tested by ELISA, Western blot analysis to assure specificity and reactivity. Since application varies, however, each investigation should be titrated by the reagent to obtain optimal results. Recommended dilution range for Western blot analysis is 1:500 ~ 1:5000. Recommended starting dilution is 1:1000.
Reactivity:	Human
Host:	Mouse
Isotype:	IgG2a
Clonality:	Monoclonal
Immunogen:	Recombinant human MRPS25 (1-173aa) purified from E. coli
Formulation:	PBS, pH 7.4 containing 0.02% Sodium Azide and 10% Glycerol State: Purified State: Liquid purified Ig fraction
Concentration:	lot specific
Purification:	Protein-A affinity chromatography
Conjugation:	Unconjugated
Storage:	Store undiluted at 2-8°C for up to two weeks or (in aliquots) at -20°C for longer. Avoid repeated freezing and thawing.
Stability:	Shelf life: one year from despatch.
Gene Name:	mitochondrial ribosomal protein S25
Database Link:	<a href="#">Entrez Gene 64432 Human P82663</a>



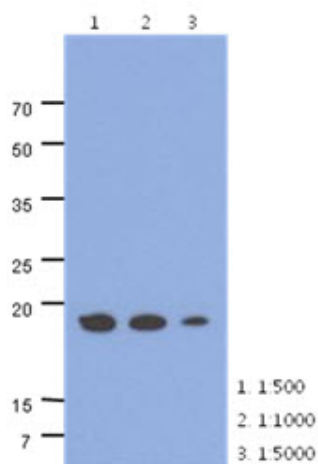
[View online »](#)

**Background:**

MRPS25 is a 28S subunit protein that belongs to the ribosomal protein S5P family. Mammalian mitochondrial ribosomal proteins are encoded by nuclear genes and help in protein synthesis within the mitochondrion. Mitochondrial ribosomes (mitoribosomes) consist of a small 28S subunit and a large 39S subunit. A pseudogene corresponding to this gene is found on chromosome 4

**Synonyms:**

S25mt, RPMS25, MRP-S25

**Product images:**

The cell lysates of HepG2 (40ug) were resolved by SDS-PAGE, transferred to PVDF membrane and probed with anti-human MRPS25 antibody (1:500 ~ 1:1000). Proteins were visualized using a goat anti-mouse secondary antibody conjugated to HRP and an ECL detection system.