

## Product datasheet for **AM50041PU-S**

### **KLF7 Mouse Monoclonal Antibody [Clone ID: AT3G3]**

#### **Product data:**

<b>Product Type:</b>	Primary Antibodies
<b>Clone Name:</b>	AT3G3
<b>Applications:</b>	ELISA, WB
<b>Recommended Dilution:</b>	The antibody has been tested by ELISA, Western blot analysis to assure specificity and reactivity. Since application varies, however, each investigation should be titrated by the reagent to obtain optimal results. Recommended starting dilution is 1:1000.
<b>Reactivity:</b>	Human
<b>Host:</b>	Mouse
<b>Isotype:</b>	IgG1
<b>Clonality:</b>	Monoclonal
<b>Immunogen:</b>	Recombinant human KLF7 (1-302aa) purified from E. coli
<b>Formulation:</b>	PBS, pH 7.4 containing 0.02% Sodium Azide and 10% Glycerol State: Purified State: Liquid purified Ig fraction
<b>Concentration:</b>	lot specific
<b>Purification:</b>	Protein-A affinity chromatography
<b>Conjugation:</b>	Unconjugated
<b>Storage:</b>	Store undiluted at 2-8°C for up to two weeks or (in aliquots) at -20°C for longer. Avoid repeated freezing and thawing.
<b>Stability:</b>	Shelf life: one year from despatch.
<b>Gene Name:</b>	Kruppel-like factor 7 (ubiquitous)
<b>Database Link:</b>	<a href="#">Entrez Gene 8609 Human</a> <a href="#">O75840</a>



[View online »](#)

**Background:**

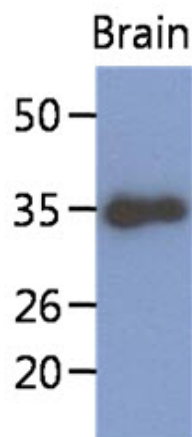
KLK7 is a member of the Kruppel-like transcriptional regulator family. Members in this family regulate cell proliferation, differentiation, survival and the development of nervous systems and contain three C2H2 zinc fingers at the C-terminus that mediate binding to GC-rich sites. KLF7 binds specifically to an Ikaros core binding element that is crucial for in vivo NTRK1/TrkA enhancer function. This protein may contribute to the progression of type 2 diabetes by inhibiting insulin expression and secretion in pancreatic beta-cells and by deregulating adipocytokine secretion in adipocytes. A pseudogene of this gene is located on the long arm of chromosome 3. Alternative splicing results in multiple transcript variants.

**Synonyms:**

KLF7, UKLF, Krueppel-like factor 7, Ubiquitous krueppel-like factor

**Protein Families:**

Transcription Factors

**Product images:**

The extract of mouse brain (40ug) were resolved by SDS-PAGE, transferred to PVDF membrane and probed with anti-human KLF7 antibody (1:1000). Proteins were visualized using a goat anti-mouse secondary antibody conjugated to HRP and an ECL detection system.