

Product datasheet for **AM50040PU-N**

Cytokeratin 19 (KRT19) (1-400) Mouse Monoclonal Antibody [Clone ID: AT13D10]

Product data:

Product Type:	Primary Antibodies
Clone Name:	AT13D10
Applications:	ELISA, FC, IF, WB
Recommended Dilution:	ELISA. Western blot: starting dilution is 1:1000. Immunocytochemistry / Immunofluorescence. Flow cytometry.
Reactivity:	Human
Host:	Mouse
Isotype:	IgG2b
Clonality:	Monoclonal
Immunogen:	Recombinant human KRT19 (1-400aa) purified from <i>E. coli</i>
Specificity:	This antibody detects Human KRT19 (1-400aa). Other species not tested.
Formulation:	PBS, pH 7.4 containing 0.02% Sodium Azide and 10% Glycerol State: Purified State: Liquid purified IgG fraction
Concentration:	lot specific
Purification:	Protein-A affinity chromatography
Conjugation:	Unconjugated
Storage:	Store undiluted at 2-8°C for up to two weeks or (in aliquots) at -20°C for longer. Avoid repeated freezing and thawing.
Stability:	Shelf life: one year from despatch.
Gene Name:	keratin 19
Database Link:	Entrez Gene 3880 Human P08727



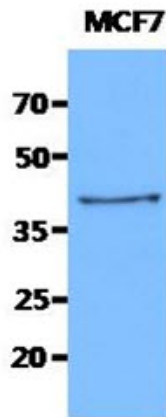
[View online »](#)

Background:

KRT19 (type 1 cytokeratin 19) is 44kDa intermediate filament (IF) protein that is part of the Keratin family of proteins. Cytokeratins play a critical role in differentiation and tissue specialization and function to maintain the overall structural integrity of epithelial cells and have been found to be useful markers of tissue differentiation. KRT19 is an important biomarker for breast cancer cells, tumor cells of the lymph nodes, peripheral blood, and bone marrow. Cytokeratin 19 can be expressed with KRT8 and KRT18 to differentiate cells of epithelial lines from hematopoietic tumor cells in the peripheral blood.

Synonyms:

Cytokeratin-19, Keratin-19, KRT19, CK19, K19

Product images:

The cell lysates of MCF7 (40ug) were resolved by SDS-PAGE, transferred to PVDF membrane and probed with anti-human KRT19 antibody (1:1000). Proteins were visualized using a goat anti-mouse secondary antibody conjugated to HRP and an ECL detection system.