

Product datasheet for **AM50039PU-S**

Syntrophin alpha 1 (SNTA1) Mouse Monoclonal Antibody [Clone ID: AT1E1]

Product data:

Product Type:	Primary Antibodies
Clone Name:	AT1E1
Applications:	ELISA, WB
Recommended Dilution:	The antibody has been tested by ELISA, Western blot analysis to assure specificity and reactivity. Since application varies, however, each investigation should be titrated by the reagent to obtain optimal results. Recommended starting dilution is 1:1000.
Reactivity:	Human
Host:	Mouse
Isotype:	IgG2b
Clonality:	Monoclonal
Immunogen:	Recombinant human SNTA1 (1-505aa) purified from E. coli
Formulation:	PBS, pH 7.4 containing 0.02% Sodium Azide and 10% Glycerol State: Purified State: Liquid purified IgG fraction
Concentration:	lot specific
Purification:	Protein-A affinity chromatography
Conjugation:	Unconjugated
Storage:	Store undiluted at 2-8°C for up to two weeks or (in aliquots) at -20°C for longer. Avoid repeated freezing and thawing.
Stability:	Shelf life: one year from despatch.
Gene Name:	syntrophin alpha 1
Database Link:	Entrez Gene 6640 Human Q13424



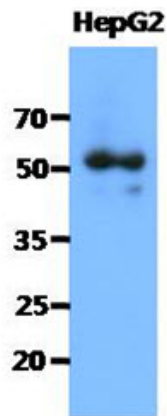
[View online »](#)

Background:

SNTA1 (Syntrophin alpha 1) is 505 amino acid protein. SNTA1 is adapter protein that binds to and probably organizes the subcellular localization of a variety of membrane proteins. It may link various receptors to the actin cytoskeleton and the extracellular matrix via the dystrophin glycoprotein complex. SNTA1 plays an important role in synapse formation and in the organization of UTRN and acetylcholine receptors at the neuromuscular synapse. Defects of SNTA1 are the cause of long QT syndrome type 12 (LQT12).

Synonyms:

Alpha-1-syntrophin, SNT1, TACIP1

Product images:

The cell lysates of HepG2 (40ug) were resolved by SDS-PAGE, transferred to PVDF membrane and probed with anti-human SNTA1 antibody (1:1000). Proteins were visualized using a goat anti-mouse secondary antibody conjugated to HRP and an ECL detection system.