

Product datasheet for **AM50035PU-N**

STAT1 Mouse Monoclonal Antibody [Clone ID: AT1F4]

Product data:

Product Type:	Primary Antibodies
Clone Name:	AT1F4
Applications:	ELISA, WB
Recommended Dilution:	The antibody has been tested by ELISA, Western blot analysis to assure specificity and reactivity. Since application varies, however, each investigation should be titrated by the reagent to obtain optimal results. Recommended dilution range for Western blot analysis is 1:500 ~ 1:1000 Recommended starting dilution is 1:500
Reactivity:	Human
Host:	Mouse
Isotype:	IgG1
Clonality:	Monoclonal
Immunogen:	Recombinant human STAT1 (1-712aa) purified from E. coli
Formulation:	PBS, pH 7.4 containing 0.02% Sodium Azide and 10% Glycerol State: Purified State: Liquid purified IgG fraction
Concentration:	lot specific
Purification:	Protein-A affinity chromatography
Conjugation:	Unconjugated
Storage:	Store undiluted at 2-8°C for up to two weeks or (in aliquots) at -20°C for longer. Avoid repeated freezing and thawing.
Stability:	Shelf life: one year from despatch.
Gene Name:	signal transducer and activator of transcription 1
Database Link:	Entrez Gene 6772 Human P42224



[View online »](#)

Background:

STAT1, also known as STAT91, is a member of the STAT protein family. In response to cytokines and growth factors, STAT family members are phosphorylated by the receptor associated kinases, and then form homo- or heterodimers that translocate to the cell nucleus where they act as transcription activators. STAT1 is activated by peptide hormones, growth factors and cytokines, particularly cytokines of the interferon family.

Synonyms:

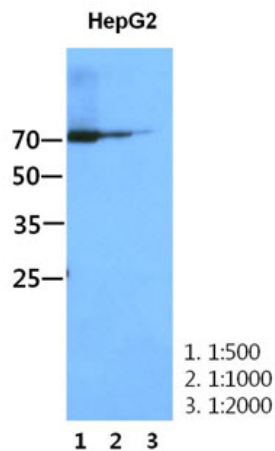
DKFZp686B04100; ISGF-3; OTTHUMP00000205845; STAT91

Protein Families:

Druggable Genome, Transcription Factors

Protein Pathways:

Chemokine signaling pathway, Jak-STAT signaling pathway, Pancreatic cancer, Pathways in cancer, Toll-like receptor signaling pathway

Product images:

The HepG2 cell lysate (50ug) were resolved by SDS-PAGE, transferred to PVDF membrane and probed with anti-human STAT1 antibody (1:500, 1:1000, 1:2000). Proteins were visualized using a goat anti-mouse secondary antibody conjugated to HRP and an ECL detecti