

Product datasheet for **AM50033PU-S**

ADI1 Mouse Monoclonal Antibody [Clone ID: AT27E8]

Product data:

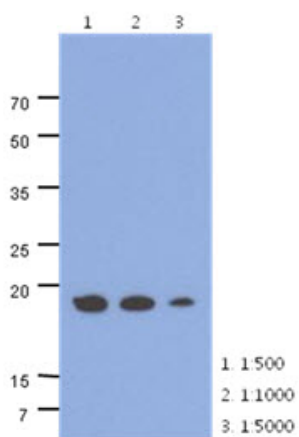
Product Type:	Primary Antibodies
Clone Name:	AT27E8
Applications:	ELISA, WB
Recommended Dilution:	The antibody has been tested by ELISA, Western blot analysis to assure specificity and reactivity. Since application varies, however, each investigation should be titrated by the reagent to obtain optimal results. Recommended dilution range for Western blot analysis is 1:500 ~ 1:5000. Recommended starting dilution is 1:1000.
Reactivity:	Human
Host:	Mouse
Isotype:	IgG1
Clonality:	Monoclonal
Immunogen:	Recombinant human ADI1 (1-179aa) purified from E. coli
Formulation:	PBS, pH 7.4 containing 0.02% Sodium Azide and 10% Glycerol State: Purified State: Liquid purified IgG fraction
Concentration:	lot specific
Purification:	Protein-A affinity chromatography
Conjugation:	Unconjugated
Storage:	Store undiluted at 2-8°C for up to two weeks or (in aliquots) at -20°C for longer. Avoid repeated freezing and thawing.
Stability:	Shelf life: one year from despatch.
Gene Name:	acireductone dioxygenase 1
Database Link:	Entrez Gene 55256 Human Q9BV57
Background:	ADI1 is an enzyme that belongs to the acireductone dioxygenase family of metal-binding enzymes, which are involved in methionine salvage. This enzyme may regulate mRNA processing in the nucleus, and may carry out different functions depending on its localization. Also, it down-regulates cell migration mediated by MMP14.



[View online »](#)

Synonyms: HMFT1638

Product images:



The cell lysates of HepG2 (40ug) were resolved by SDS-PAGE, transferred to PVDF membrane and probed with anti-human ADI1 antibody (1:500 ~ 1:1000). Proteins were visualized using a goat anti-mouse secondary antibody conjugated to HRP and an ECL detection system.