

## Product datasheet for **AM50033PU-N**

### ADI1 Mouse Monoclonal Antibody [Clone ID: AT27E8]

#### Product data:

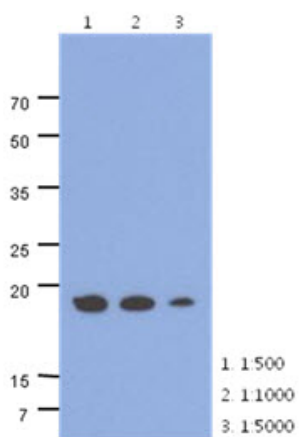
|                       |  |
|-----------------------|--|
| Product Type:         | Primary Antibodies   |
| Clone Name:           | AT27E8   |
| Applications:         | ELISA, WB  |
| Recommended Dilution: | The antibody has been tested by ELISA, Western blot analysis to assure specificity and reactivity. Since application varies, however, each investigation should be titrated by the reagent to obtain optimal results. Recommended dilution range for Western blot analysis is 1:500 ~ 1:5000. Recommended starting dilution is 1:1000. |
| Reactivity:           | Human  |
| Host:                 | Mouse  |
| Isotype:              | IgG1   |
| Clonality:            | Monoclonal   |
| Immunogen:            | Recombinant human ADI1 (1-179aa) purified from E. coli   |
| Formulation:          | PBS, pH 7.4 containing 0.02% Sodium Azide and 10% Glycerol<br>State: Purified<br>State: Liquid purified IgG fraction   |
| Concentration:        | lot specific   |
| Purification:         | Protein-A affinity chromatography  |
| Conjugation:          | Unconjugated   |
| Storage:              | Store undiluted at 2-8°C for up to two weeks or (in aliquots) at -20°C for longer.<br>Avoid repeated freezing and thawing.   |
| Stability:            | Shelf life: one year from despatch.  |
| Gene Name:            | acireductone dioxygenase 1   |
| Database Link:        | <a href="#">Entrez Gene 55256 Human Q9BV57</a>   |
| Background:           | ADI1 is an enzyme that belongs to the acireductone dioxygenase family of metal-binding enzymes, which are involved in methionine salvage. This enzyme may regulate mRNA processing in the nucleus, and may carry out different functions depending on its localization. Also, it down-regulates cell migration mediated by MMP14.      |



[View online »](#)

Synonyms: HMFT1638

### Product images:



The cell lysates of HepG2 (40ug) were resolved by SDS-PAGE, transferred to PVDF membrane and probed with anti-human ADI1 antibody (1:500 ~ 1:1000). Proteins were visualized using a goat anti-mouse secondary antibody conjugated to HRP and an ECL detection system.