

## Product datasheet for **AM50030PU-N**

### alpha Synuclein (SNCA) Mouse Monoclonal Antibody [Clone ID: AT1E10]

#### Product data:

Product Type:	Primary Antibodies
Clone Name:	AT1E10
Applications:	ELISA, IF, WB
Recommended Dilution:	<b>ELISA.</b> <b>Western blot.</b> <b>Immunofluorescence.</b>
Reactivity:	Human
Host:	Mouse
Isotype:	IgG1
Clonality:	Monoclonal
Immunogen:	Recombinant human alpha-synuclein (1-140aa) purified from E. coli
Specificity:	This antibody recognizes Human Alpha-Synuclein. Other species not tested.
Formulation:	PBS, pH 7.4 containing 0.02% Sodium Azide and 10% Glycerol State: Purified State: Liquid purified Ig fraction
Concentration:	lot specific
Purification:	Protein-A affinity chromatography
Conjugation:	Unconjugated
Storage:	Store undiluted at 2-8°C for up to two weeks or (in aliquots) at -20°C for longer. Avoid repeated freezing and thawing.
Stability:	Shelf life: one year from despatch.
Gene Name:	synuclein alpha
Database Link:	<a href="#">Entrez Gene 6622 Human P37840</a>



[View online »](#)

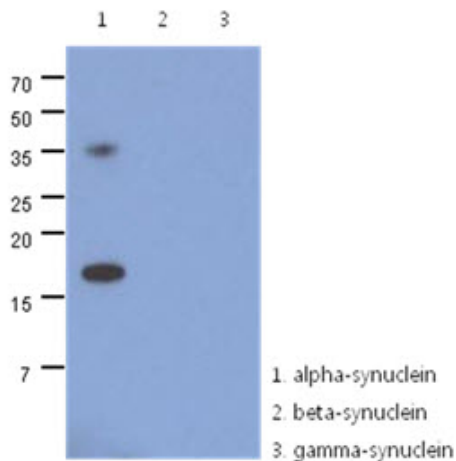
**Background:** Alpha-synuclein (amino acids 1-140), an acidic neuronal protein of 140 amino acids, is extremely heat-resistant and is natively unfolded with an extended structure primarily composed of random coils. alpha-synuclein has been suggested to be implicated in the pathogenesis of Parkinson's disease and related neurodegenerative disorders, and more recently, to be an important regulatory component of vesicular transport in neuronal cells.

**Synonyms:** NACP, PARK1

**Protein Families:** Druggable Genome

**Protein Pathways:** Alzheimer's disease, Parkinson's disease

### Product images:



The recombinant human synuclein family (alpha-, beta- and gamma-) proteins (100ng) were resolved by SDS-PAGE, transferred to PVDF membrane and probed with anti-human alpha-synuclein antibody (1:500). Proteins were visualized using a goat anti-mouse secondary antibody conjugated to HRP and an ECL detection system.