

## Product datasheet for **AM50028PU-N**

### CISD1 Mouse Monoclonal Antibody [Clone ID: AT1A8]

#### Product data:

Product Type:	Primary Antibodies
Clone Name:	AT1A8
Applications:	ELISA, FC, WB
Recommended Dilution:	<b>ELISA.</b> <b>Western blot:</b> 1/1000. <b>Immunohistochemistry on Paraffin Sections:</b> 10 µg/ml. <b>Flow Cytometry.</b>
Reactivity:	Human
Host:	Mouse
Isotype:	IgG1
Clonality:	Monoclonal
Immunogen:	Recombinant Human CISD1 (32-108aa) purified from <i>E. coli</i>
Specificity:	This antibody recognizes Human CISD1. Other species not tested.
Formulation:	PBS, pH 7.4 containing 0.02% Sodium Azide and 10% Glycerol State: Purified State: Liquid purified Ig fraction
Concentration:	lot specific
Purification:	Affinity Chromatography on Protein A
Conjugation:	Unconjugated
Storage:	Store undiluted at 2-8°C for up to two weeks or (in aliquots) at -20°C for longer. Avoid repeated freezing and thawing.
Stability:	Shelf life: one year from despatch.
Gene Name:	CDGSH iron sulfur domain 1
Database Link:	<a href="#">Entrez Gene 55847 Human Q9NZ45</a>



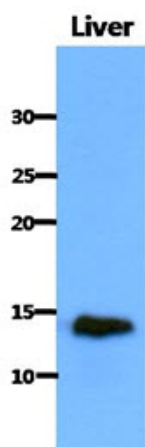
[View online »](#)

**Background:** CISD1 (CDGSH iron-sulfur domain-containing protein 1) is 108 amino acid protein. CISD1 plays a key role in regulating maximal capacity for electron transport and oxidative phosphorylation. May be involved in Fe-S cluster shuttling and/or in redox reactions. This protein expression is reduced in cells derived from cystic fibrosis patients.

**Synonyms:** C10orf70, ZCD1, MDS029, MitoNEET

**Protein Families:** Transmembrane

**Product images:**



Western Blot: The extract of Mouse liver (40ug) were resolved by SDS-PAGE, transferred to PVDF membrane and probed with anti-human CISD1 antibody (1/1000). Proteins were visualized using a goat anti-mouse secondary antibody.