

Product datasheet for **AM50024PU-N**

MRRF Mouse Monoclonal Antibody [Clone ID: AT7D10]

Product data:

| | |
|-----------------------|--|
| Product Type: | Primary Antibodies |
| Clone Name: | AT7D10 |
| Applications: | ELISA, WB |
| Recommended Dilution: | The antibody has been tested by ELISA and Western blot analysis to assure specificity and reactivity. Since application varies, however, each investigation should be titrated by the reagent to obtain optimal results. Recommended starting dilution is 1/1000. |
| Reactivity: | Human |
| Host: | Mouse |
| Isotype: | IgG1 |
| Clonality: | Monoclonal |
| Immunogen: | Recombinant Human MRRF (56-262aa) purified from E. coli |
| Formulation: | PBS, pH 7.4 containing 0.02% Sodium Azide and 10% Glycerol State: Purified State: Liquid purified Ig fraction |
| Concentration: | lot specific |
| Purification: | Protein-A affinity chromatography |
| Conjugation: | Unconjugated |
| Storage: | Store undiluted at 2-8°C for up to two weeks or (in aliquots) at -20°C for longer. Avoid repeated freezing and thawing. |
| Stability: | Shelf life: one year from despatch. |
| Gene Name: | mitochondrial ribosome recycling factor |
| Database Link: | Entrez Gene 92399 Human Q96E11 |



[View online »](#)

Background:

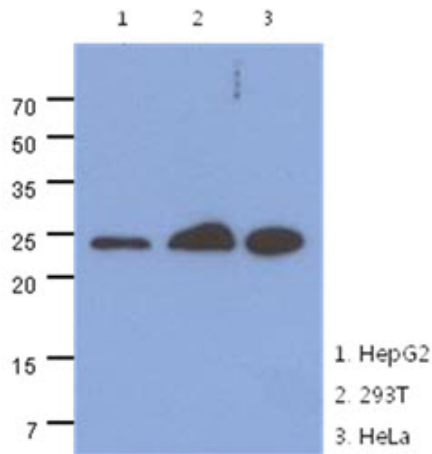
Mitochondrial ribosome recycling factor, also known as MRRF, is a 262 amino acid protein that belongs to the ribosome recycling factor (RRF) family. Localized to mitochondria, MRRF is responsible for the release of ribosomes from messenger RNA at the termination of protein biosynthesis. It may increase the efficiency of translation by recycling ribosomes from one round of translation to another. MRRF belongs to the RRF family. 8 isoforms of the human protein are produced by alternative splicing.

Synonyms:

RRF, Ribosome-recycling factor, mitochondrial, Ribosome-releasing facto

Protein Families:

Transmembrane

Product images:

The cell lysates (40ug) were resolved by SDS-PAGE, transferred to PVDF membrane and probed with anti-human MRRF antibody (1:1000). Proteins were visualized using a goat anti-mouse secondary antibody conjugated to HRP and an ECL detection system.