

Product datasheet for **AM50023PU-N**

CNDP2 Mouse Monoclonal Antibody [Clone ID: AT15E5]

Product data:

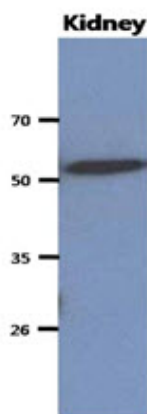
| | |
|-----------------------|--|
| Product Type: | Primary Antibodies |
| Clone Name: | AT15E5 |
| Applications: | ELISA, WB |
| Recommended Dilution: | The antibody has been tested by ELISA, Western blot analysis to assure specificity and reactivity. Since application varies, however, each investigation should be titrated by the reagent to obtain optimal results. Recommended dilution range for Western blot analysis is 1:500 ~ 1:5000. Recommended starting dilution is 1:1000. |
| Reactivity: | Human |
| Host: | Mouse |
| Isotype: | IgG1 |
| Clonality: | Monoclonal |
| Immunogen: | Recombinant human CNDP2 (1-475aa) purified from E. coli |
| Formulation: | PBS, pH 7.4 containing 0.02% Sodium Azide and 10% Glycerol State: Purified State: Liquid purified Ig fraction |
| Concentration: | lot specific |
| Purification: | Protein-G affinity chromatography |
| Conjugation: | Unconjugated |
| Storage: | Store undiluted at 2-8°C for up to two weeks or (in aliquots) at -20°C for longer. Avoid repeated freezing and thawing. |
| Stability: | Shelf life: one year from despatch. |
| Gene Name: | CNDP dipeptidase 2 (metallopeptidase M20 family) |
| Database Link: | Entrez Gene 55748 Human Q96KP4 |
| Background: | CNDP2, known as tissue carnosinase and peptidase A, is a nonspecific dipeptidase rather than a selective carnosinase and is a secreted peptidase homologous to M20 peptidases. Also known as glutamate carboxypeptidase-like protein 1 (CPGL), CNDP2 is ubiquito |
| Synonyms: | CNDP dipeptidase 2, Peptidase A, CN2, CPGL, PEPA |



[View online »](#)

Protein Families: Protease

Product images:



The extract of Mouse kidney (40ug) were resolved by SDS-PAGE, transferred to PVDF membrane and probed with anti-human CNDP2 antibody (1:1000). Proteins were visualized using a goat anti-mouse secondary antibody conjugated to HRP and an ECL detection system.