

Product datasheet for **AM50020PU-S**

CMBL Mouse Monoclonal Antibody [Clone ID: AT2B11]

Product data:

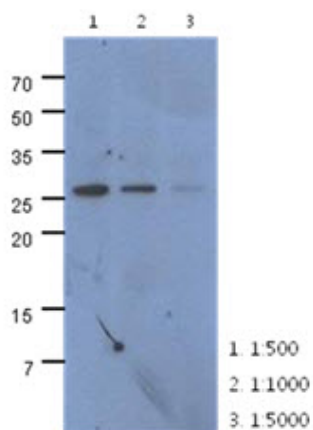
Product Type:	Primary Antibodies
Clone Name:	AT2B11
Applications:	ELISA, WB
Recommended Dilution:	The antibody has been tested by ELISA, Western blot analysis to assure specificity and reactivity. Since application varies, however, each investigation should be titrated by the reagent to obtain optimal results. Recommended dilution range for Western blot analysis is 1:500 ~ 1:5000. Recommended starting dilution is 1:500.
Reactivity:	Human
Host:	Mouse
Isotype:	IgG2a
Clonality:	Monoclonal
Immunogen:	Recombinant human CMBL (1-245aa) purified from E. coli
Formulation:	PBS, pH 7.4 containing 0.02% Sodium Azide and 10% Glycerol State: Purified State: Liquid purified Ig fraction
Concentration:	lot specific
Purification:	Protein-G affinity chromatography
Conjugation:	Unconjugated
Storage:	Store undiluted at 2-8°C for up to two weeks or (in aliquots) at -20°C for longer. Avoid repeated freezing and thawing.
Stability:	Shelf life: one year from despatch.
Gene Name:	carboxymethylenebutenolidase homolog (Pseudomonas)
Database Link:	Entrez Gene 134147 Human Q96DG6
Background:	CMBL(carboxymethylenebutenolidase homolog) is a 245 amino acid cytosolic protein and cysteine hydrolase of the dienelactone hydrolase family that is highly expressed in liver cytosol. CMBL is the human homolog of Pseudomonas dienelactone hydrolase, a prot
Synonyms:	carboxymethylenebutenolidase; FLJ23617



[View online »](#)

Protein Pathways: Metabolic pathways

Product images:



The extracts of HeLa (40ug) were resolved by SDS-PAGE, transferred to PVDF membrane and probed with anti-human CMBL antibody (1:500 ~ 1:5000). Proteins were visualized using a goat anti-mouse secondary antibody conjugated to HRP and an ECL detection system