

## Product datasheet for **AM50017PU-S**

### MEMO1 Mouse Monoclonal Antibody [Clone ID: AT1E9]

#### Product data:

Product Type:	Primary Antibodies
Clone Name:	AT1E9
Applications:	ELISA, WB
Recommended Dilution:	<b>ELISA.</b> <b>Western blot:</b> 1/3000.
Reactivity:	Human
Host:	Mouse
Isotype:	IgG1
Clonality:	Monoclonal
Immunogen:	Recombinant human MEMO1 (1-297aa) purified from E. coli
Formulation:	PBS, pH 7.4 containing 0.02% Sodium Azide and 10% Glycerol State: Purified State: Liquid purified Ig fraction
Concentration:	lot specific
Purification:	Protein-G affinity chromatography
Conjugation:	Unconjugated
Storage:	Store undiluted at 2-8°C for up to two weeks or (in aliquots) at -20°C for longer. Avoid repeated freezing and thawing.
Stability:	Shelf life: one year from despatch.
Gene Name:	mediator of cell motility 1
Database Link:	<a href="#">Entrez Gene 51072 Human Q9Y316</a>



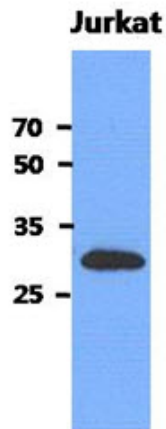
[View online »](#)

**Background:**

MEMO1 (Mediator of ErbB2-driven cell motility 1) is a 297 amino acid protein. It is thought to relax extracellular chemotactic signals that are targeted at the microtubule cytoskeleton, thereby controlling cell migration. Additionally, MEMO1 is required for breast carcinoma migration, suggesting an important role in tumorigenesis. The MEMO1-RHOA-DIAPH1 signaling pathway plays an important role in ERBB2-dependent stabilization of microtubules at the cell cortex. It controls the localization of APC and CLASP2 to the cell membrane, via the regulation of GSK3B activity

**Synonyms:**

C2orf4, NS5ATP7, CGI-27

**Product images:**

Western blot using MEMO1 antibody no. : The cell lysates of Jurkat (40ug) were resolved by SDS-PAGE, transferred to PVDF membrane and probed with anti-human MEMO1 antibody (1:3000). Proteins were visualized using a goat anti-mouse secondary antibody conjugated to HRP and an ECL detection system.