

## Product datasheet for **AM50016PU-N**

### GCLM Mouse Monoclonal Antibody [Clone ID: AT2D12]

#### Product data:

Product Type:	Primary Antibodies
Clone Name:	AT2D12
Applications:	ELISA, FC, IF, WB
Recommend Dilution:	<b>ELISA.</b> <b>Western blot:</b> 1/3000 (using HeLa cells (40 µg), resolved by SDS-PAGE). <b>Flow cytometry:</b> 2-5 µg in 1x10 <sup>6</sup> cells (in HeLa cell line). <b>Immunofluorescence/Immunocytochemistry:</b> 1/100 (in HeLa cell line).
Reactivity:	Human
Host:	Mouse
Isotype:	IgG1
Clonality:	Monoclonal
Immunogen:	Recombinant human GCLM (1-274aa) purified from E. coli
Formulation:	PBS, pH 7.4 containing 0.02% Sodium Azide and 10% Glycerol State: Purified State: Liquid purified Ig fraction
Concentration:	lot specific
Purification:	Protein-G affinity chromatography
Storage:	Store undiluted at 2-8°C for up to two weeks or (in aliquots) at -20°C for longer. Avoid repeated freezing and thawing.
Stability:	Shelf life: one year from despatch.
Gene Name:	Homo sapiens glutamate-cysteine ligase modifier subunit (GCLM), transcript variant 1
Database Link:	<a href="#">Entrez Gene 2730 Human</a>
Background:	GCLM (Glutamate-cysteine ligase, modifier subunit), also known as gamma-glutamylcysteine synthetase, is first rate limiting enzyme of glutathione synthesis. GCLM is heterodimer of a heavy catalytic subunit and a light regulatory subunit that is responsive to inflammation, phenolic antioxidants, heat shock, oxidants and cytokines. GCLM deficiency has been implicated in some forms of hemolytic anemia. Also, GCLM is a molecular target for amelioration of cisplatin resistance in lung cancer.



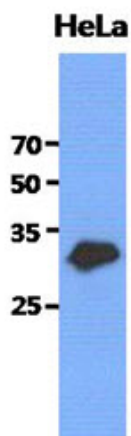
[View online »](#)

**Synonyms:** Gamma-ECS regulatory subunit, GCS light chain

**Protein Families:** Druggable Genome

**Protein Pathways:** Glutathione metabolism, Metabolic pathways

**Product images:**



Western blot using GCLM / GLCLR antibody no. :  
The cell lysates of HeLa (40ug) were resolved by SDS-PAGE, transferred to PVDF membrane and probed with anti-human GCLM antibody (1:3000). Proteins were visualized using a goat anti-mouse secondary antibody conjugated to HRP and an ECL detection system.