

Product datasheet for **AM50013PU-S**

Prostate Specific Antigen (KLK3) Mouse Monoclonal Antibody [Clone ID: AT1D10]

Product data:

Product Type:	Primary Antibodies
Clone Name:	AT1D10
Applications:	ELISA, IHC, WB
Recommended Dilution:	ELISA. Western blot: 1/500-1/5000. Immunohistochemistry on Paraffin Sections: This Monoclonal antibody is reported to work at 10 µg/ml.
Reactivity:	Human
Host:	Mouse
Isotype:	IgG1
Clonality:	Monoclonal
Immunogen:	Recombinant Human KLK3 (25-261 aa) purified from <i>E. coli</i>
Specificity:	This Monoclonal AT1D10 antibody recognizes Human PSA/Prostate Specific Antigen. Other species not tested.
Formulation:	PBS, pH 7.4 containing 0.02% Sodium Azide and 10% Glycerol State: Purified State: Liquid purified IgG fraction
Concentration:	lot specific
Purification:	Affinity Chromatography on Protein G
Conjugation:	Unconjugated
Storage:	Store undiluted at 2-8°C for up to two weeks or (in aliquots) at -20°C for longer. Avoid repeated freezing and thawing.
Stability:	Shelf life: one year from despatch.
Gene Name:	kallikrein related peptidase 3
Database Link:	Entrez Gene 354 Human P07288



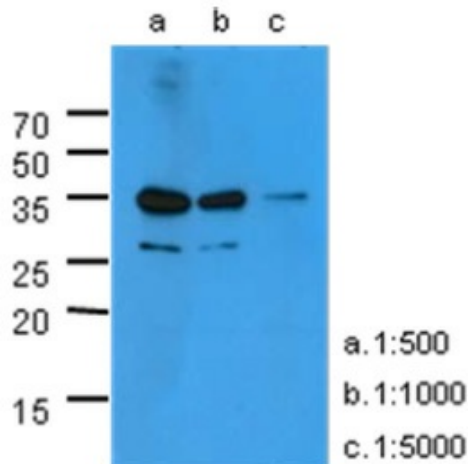
[View online »](#)

Background:

Prostate-specific antigen (PSA), also known as gamma-seminoprotein or kallikrein-3 (KLK3), is a member of the kallikrein-related peptidase family and is secreted by the epithelial cells of the prostate gland. PSA is present in small quantities in the serum of men with healthy prostates, but is often elevated in the presence of prostate cancer or other prostate disorders. PSA is now used to indicate the presence of semen in forensic serology. The semen of adult males has PSA levels far in excess of those found in other tissues; therefore, a high level of PSA found in a sample is an indicator that semen may be present. Because PSA is a biomarker that is expressed independently of spermatozoa, it remains useful in identifying semen from vasectomized and azoospermic males.

Synonyms:

Prostate-specific antigen, Semenogelase, Gamma-seminoprotein, P-30 antigen

Product images:

Western Blot: The extracts of PC-3 (40ug) were resolved by SDS-PAGE, transferred to PVDF membrane and probed with anti-human KLK3 antibody (1/500-1/5000). Proteins were visualized using a Goat anti-Mouse secondary antibody conjugated to HRP and an ECL detection system.