

Product datasheet for **AM50011PU-S**

LSM2 Mouse Monoclonal Antibody [Clone ID: 1G7]

Product data:

Product Type:	Primary Antibodies
Clone Name:	1G7
Applications:	ELISA, WB
Recommended Dilution:	The antibody has been tested by ELISA, Western blot analysis to assure specificity and reactivity. Since application varies, however, each investigation should be titrated by the reagent to obtain optimal results. Recommended dilution range for Western blot analysis is 1:1,000~1:3,000.
Reactivity:	Human
Host:	Mouse
Isotype:	IgG2a
Clonality:	Monoclonal
Immunogen:	Recombinant human LSm2 (1-95aa) purified from E. coli
Formulation:	PBS, pH 7.4 containing 0.02% Sodium Azide and 10% Glycerol State: Purified State: Liquid purified Ig fraction
Concentration:	lot specific
Purification:	Protein-G affinity chromatography
Conjugation:	Unconjugated
Storage:	Store undiluted at 2-8°C for up to two weeks or (in aliquots) at -20°C for longer. Avoid repeated freezing and thawing.
Stability:	Shelf life: one year from despatch.
Gene Name:	LSM2 homolog, U6 small nuclear RNA and mRNA degradation associated
Database Link:	Entrez Gene 57819 Human Q9Y333



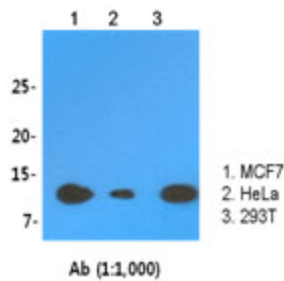
[View online »](#)

Background:

LSM2 is a member of the LSm family of RNA-binding proteins. Component of LSm protein complexes, which are involved in RNA processing and may function in a chaperone-like manner. Component of the cytoplasmic complex which is thought to be involved in mRNA degradation by activating the decapping step. Component of the nuclear LSM2 complex, which is involved in splicing of nuclear mRNAs. LSM2 associates with multiple snRNP complexes containing the U6 snRNA. It binds directly to the U6 snRNA and plays a role in the biogenesis and stability of the U6 snRNP and U4/U6 snRNP complexes. It probably also is involved degradation of nuclear pre-mRNA by targeting them for decapping. LSM2 binds specifically to the 3'-terminal U-tract of U6 snRNA. LSM2-LSM8 probably is involved in processing of pre-tRNAs, pre-rRNAs and U3 snoRNA.

Synonyms:

C6orf28, G7B

Product images:

The cell lysates (30ug) were resolved by SDS-PAGE, transferred to PVDF membrane and probed with anti-human LSM2 antibody (1:1,000). Proteins were visualized using a goat anti-mouse secondary antibody conjugated to HRP and an ECL detection system.