

Product datasheet for **AM50010PU-S**

KRT23 Mouse Monoclonal Antibody [Clone ID: AT2F6]

Product data:

Product Type:	Primary Antibodies
Clone Name:	AT2F6
Applications:	ELISA, WB
Recommended Dilution:	The antibody has been tested by ELISA, Western blot analysis to assure specificity and reactivity. Since application varies, however, each investigation should be titrated by the reagent to obtain optimal results. Recommended dilution range for Western blot analysis is 1:500 ~ 1:3000.
Reactivity:	Human
Host:	Mouse
Isotype:	IgG1
Clonality:	Monoclonal
Immunogen:	Recombinant human KRT23 (271-422aa) purified from E. coli
Formulation:	PBS, pH 7.4 containing 0.02% Sodium Azide and 10% Glycerol State: Purified State: Liquid purified Ig fraction
Concentration:	lot specific
Purification:	Protein-G affinity chromatography
Conjugation:	Unconjugated
Storage:	Store undiluted at 2-8°C for up to two weeks or (in aliquots) at -20°C for longer. Avoid repeated freezing and thawing.
Stability:	Shelf life: one year from despatch.
Gene Name:	keratin 23
Database Link:	Entrez Gene 25984 Human Q9C075



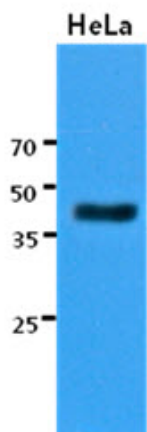
[View online »](#)

Background:

KRT23, also known as cytokeratin 23, is a 422 amino acid intermediate filament protein. The human KRT23 gene is located on chromosome 17q21.2. The type I cytokeratins consist of acidic proteins which are arranged in pairs of heterotypic keratin chains. The cytokeratin proteins play a critical role in differentiation, as well as tissue specialization and function, and maintenance of epithelial cells structure. Cytokeratins are described to be differentiation markers in several epithelial cancers.

Synonyms:

KRT23, Cytokeratin-23, CK23, Keratin-23, K23

Product images:

The cell lysates of HeLa (30ug) were resolved by SDS-PAGE, transferred to PVDF membrane and probed with anti-human KRT23 antibody (1:3000). Proteins were visualized using a goat anti-mouse secondary antibody conjugated to HRP and an ECL detection system.