

## Product datasheet for **AM50010PU-N**

### **KRT23 Mouse Monoclonal Antibody [Clone ID: AT2F6]**

#### **Product data:**

|                              |   |
|------------------------------|---|
| <b>Product Type:</b>         | Primary Antibodies  |
| <b>Clone Name:</b>           | AT2F6   |
| <b>Applications:</b>         | ELISA, WB   |
| <b>Recommended Dilution:</b> | The antibody has been tested by ELISA, Western blot analysis to assure specificity and reactivity. Since application varies, however, each investigation should be titrated by the reagent to obtain optimal results. Recommended dilution range for Western blot analysis is 1:500 ~ 1:3000. |
| <b>Reactivity:</b>           | Human   |
| <b>Host:</b>                 | Mouse   |
| <b>Isotype:</b>              | IgG1  |
| <b>Clonality:</b>            | Monoclonal  |
| <b>Immunogen:</b>            | Recombinant human KRT23 (271-422aa) purified from E. coli   |
| <b>Formulation:</b>          | PBS, pH 7.4 containing 0.02% Sodium Azide and 10% Glycerol<br>State: Purified<br>State: Liquid purified Ig fraction   |
| <b>Concentration:</b>        | lot specific  |
| <b>Purification:</b>         | Protein-G affinity chromatography   |
| <b>Conjugation:</b>          | Unconjugated  |
| <b>Storage:</b>              | Store undiluted at 2-8°C for up to two weeks or (in aliquots) at -20°C for longer.<br>Avoid repeated freezing and thawing.  |
| <b>Stability:</b>            | Shelf life: one year from despatch.   |
| <b>Gene Name:</b>            | keratin 23  |
| <b>Database Link:</b>        | <a href="#">Entrez Gene 25984 Human Q9C075</a>  |



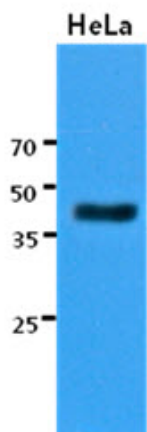
[View online »](#)

**Background:**

KRT23, also known as cytokeratin 23, is a 422 amino acid intermediate filament protein. The human KRT23 gene is located on chromosome 17q21.2. The type I cytokeratins consist of acidic proteins which are arranged in pairs of heterotypic keratin chains. The cytokeratin proteins play a critical role in differentiation, as well as tissue specialization and function, and maintenance of epithelial cells structure. Cytokeratins are described to be differentiation markers in several epithelial cancers.

**Synonyms:**

KRT23, Cytokeratin-23, CK23, Keratin-23, K23

**Product images:**

The cell lysates of HeLa (30ug) were resolved by SDS-PAGE, transferred to PVDF membrane and probed with anti-human KRT23 antibody (1:3000). Proteins were visualized using a goat anti-mouse secondary antibody conjugated to HRP and an ECL detection system.