

Product datasheet for **AM50008PU-N**

GIPC (GIPC2) Mouse Monoclonal Antibody [Clone ID: AT1G10]

Product data:

Product Type:	Primary Antibodies
Clone Name:	AT1G10
Applications:	ELISA, WB
Recommended Dilution:	The antibody has been tested by ELISA, Western blot analysis to assure specificity and reactivity. Since application varies, however, each investigation should be titrated by the reagent to obtain optimal results. Recommended dilution range for Western blot analysis is 1:1000.
Reactivity:	Human
Host:	Mouse
Isotype:	IgG1
Clonality:	Monoclonal
Immunogen:	Recombinant human GIPC2 (1-315aa) purified from E. coli
Formulation:	PBS, pH 7.4 containing 0.02% Sodium Azide and 10% Glycerol State: Purified State: Liquid purified Ig fraction
Concentration:	lot specific
Purification:	Protein-G affinity chromatography
Conjugation:	Unconjugated
Storage:	Store undiluted at 2-8°C for up to two weeks or (in aliquots) at -20°C for longer. Avoid repeated freezing and thawing.
Stability:	Shelf life: one year from despatch.
Gene Name:	GIPC PDZ domain containing family member 2
Database Link:	Entrez Gene 54810 Human Q8TF65



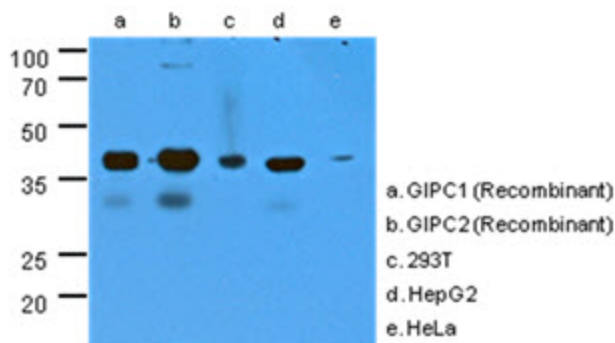
[View online »](#)

Background:

GIPC, GAIP interacting protein at the C terminus, is a PDZ domain containing protein that interacts with RGS-GAIP. GIPC was also identified as TIP-2, a protein that interacts with the viral oncoprotein TAX, which transactivates viral and cellular promoters through interactions with various transcription factors. GIPC specifically localizes to clusters of vesicles near the plasma membrane and participates in G protein-coupled signaling pathway involved in regulating clathrin-coated vesicular trafficking. GIPC also associates with membrane bound semaphorin F (M-SemF), which is involved in neuronal axon growth, and it appears to regulate the subcellular distribution of M-SemF in the brain.

Synonyms:

FLJ20075; SEMCAP-2; SEMCAP2

Product images:

The cell lysates (40ug) were resolved by SDS-PAGE, transferred to PVDF membrane and probed with anti-human GIPC antibody (1:1000). Proteins were visualized using a goat anti-mouse secondary antibody conjugated to HRP and an ECL detection system. The cross-reacting of anti-human GIPC (AT1G10) were analyzed by using recombinant protein (20ng) of GIPC1 and GIPC2.