

Product datasheet for **AM39042PU-N**

PPIC (39-197) Mouse Monoclonal Antibody [Clone ID: AT3C6]

Product data:

Product Type:	Primary Antibodies
Clone Name:	AT3C6
Applications:	ELISA, FC, IF, WB
Recommended Dilution:	Western blot (1:1000). ELISA. Immunocytochemistry / Immunofluorescence. Flow cytometry.
Reactivity:	Human
Host:	Mouse
Isotype:	IgG2b
Clonality:	Monoclonal
Immunogen:	Recombinant human PPIC (39-197aa) protein purified from <i>E. coli</i>
Specificity:	The antibody recognizes human Cyclophilin C at aa 39-197. Other species not tested.
Formulation:	PBS, pH 7.4 containing 0.02% Sodium Azide and 10% Glycerol State: Purified State: Liquid purified Ig fraction
Concentration:	lot specific
Purification:	Protein-G affinity chromatography
Conjugation:	Unconjugated
Storage:	Store undiluted at 2-8°C for up to two weeks or (in aliquots) at -20°C for longer. Avoid repeated freezing and thawing.
Stability:	Shelf life: one year from despatch.
Gene Name:	Homo sapiens peptidylprolyl isomerase C (PPIC)
Database Link:	Entrez Gene 5480 Human P45877



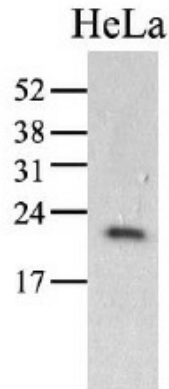
[View online »](#)

Background: Cyclophilin C (PPIC) is a member of the peptidyl-prolyl cis-trans isomerase (PPIase) family. PPIases catalyze the cis-trans isomerization of proline imidic peptide bonds in oligopeptides and accelerate the folding of proteins. Similar to other PPIases, this protein can bind immunosuppressant cyclosporin A.

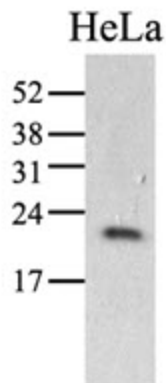
Synonyms: PPIase C, Rotamase C, PPIC, CYPC

Protein Families: Transmembrane

Product images:



The HeLa (40ug) were resolved by SDS-PAGE, transferred to PVDF membrane and probed with anti-human PPIC antibody (1:1000). Proteins were visualized using a goat anti-mouse secondary antibody conjugated to HRP and an ECL detection system.



Western blot analysis: HeLa (40 ug) were resolved by SDS-PAGE, transferred to PVDF membrane and probed with anti-human PPIC antibody (1:1000). Proteins were visualized using a goat anti-mouse secondary antibody conjugated to HRP and an ECL detection system.