

Product datasheet for **AM39005PU-S**

Myoglobin (MB) Mouse Monoclonal Antibody [Clone ID: AT6E10]

Product data:

Product Type:	Primary Antibodies
Clone Name:	AT6E10
Applications:	ELISA, WB
Recommended Dilution:	ELISA. Western blot (1:1000).
Reactivity:	Human, Mouse
Host:	Mouse
Isotype:	IgG1
Clonality:	Monoclonal
Immunogen:	Recombinant human MB (1-154aa) purified from E. coli
Specificity:	The antibody recognizes human and mouse Myoglobin. Other species not tested.
Formulation:	PBS, pH 7.4 containing 0.02% Sodium Azide and 10% Glycerol State: Purified State: Liquid purified protein
Concentration:	lot specific
Purification:	Protein-G affinity chromatography
Conjugation:	Unconjugated
Storage:	Store undiluted at 2-8°C for up to two weeks or (in aliquots) at -20°C for longer. Avoid repeated freezing and thawing.
Stability:	Shelf life: one year from despatch.
Gene Name:	myoglobin
Database Link:	Entrez Gene 17189 Mouse Entrez Gene 4151 Human P02144



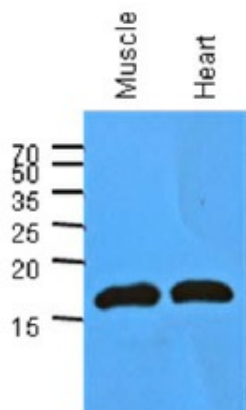
[View online »](#)

Background:

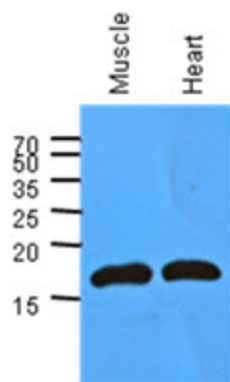
Myoglobin (MB) is an iron- and oxygen-binding protein. It is found in abundance in the muscle tissue of vertebrates in general and in almost all mammals. MB is related to hemoglobin, which consists of four myoglobin-like subunits that form a tetramer and are responsible for carrying oxygen in blood. The only time myoglobin is found in the bloodstream is when it is released following muscle injury. It is an abnormal finding, and can be diagnostically relevant when found in blood.

Synonyms:

MB

Product images:

The extracts of mouse muscle and heart (40ug) were resolved by SDS-PAGE, transferred to PVDF membrane and probed with anti-human MB antibody (1:1000). Proteins were visualized using a goat anti-mouse secondary antibody conjugated to HRP and an ECL detection system.



Western blot analysis: The extracts of mouse muscle and heart (40 ug) were resolved by SDS-PAGE, transferred to PVDF membrane and probed with anti-human MB antibody (1:1000). Proteins were visualized using a goat anti-mouse secondary antibody conjugated to HRP and an ECL detection system.