

## Product datasheet for **AM39002PU-N**

### PNMT Mouse Monoclonal Antibody [Clone ID: AT1C11]

#### Product data:

Product Type:	Primary Antibodies
Clone Name:	AT1C11
Applications:	ELISA, IF, WB
Recommended Dilution:	<b>ELISA.</b> <b>Western blot</b> (1/500). <b>Immunofluorescence</b> (1/100).
Reactivity:	Human
Host:	Mouse
Isotype:	IgG1
Clonality:	Monoclonal
Immunogen:	Recombinant human PNMT (1-282aa) purified from E. coli
Specificity:	The antibody recognizes Human PNMT. Other species not tested.
Formulation:	PBS, pH 7.4 containing 0.02% Sodium Azide and 10% Glycerol State: Purified State: Liquid purified Ig fraction
Concentration:	lot specific
Purification:	Protein-G affinity chromatography
Conjugation:	Unconjugated
Storage:	Store undiluted at 2-8°C for up to two weeks or (in aliquots) at -20°C for longer. Avoid repeated freezing and thawing.
Stability:	Shelf life: one year from despatch.
Gene Name:	phenylethanolamine N-methyltransferase
Database Link:	<a href="#">Entrez Gene 5409 Human P11086</a>



[View online »](#)

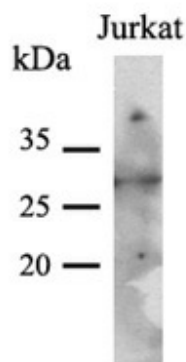
**Background:** Phenylethanolamine N-methyltransferase (PNMT) catalyzes the synthesis of epinephrine and plays an important role in regulating cardiovascular function. Expression of PNMT is regulated by hormonal and neural stimuli because its promoter contains sequences responding to cholinergic and depolarization stimuli. PNMT is the final enzyme in the catecholamine pathway, catalyzing the conversion of norepinephrine to epinephrine using as the cosubstrate and methyl donor, S-adenosylmethionine.

**Synonyms:** PNMTase

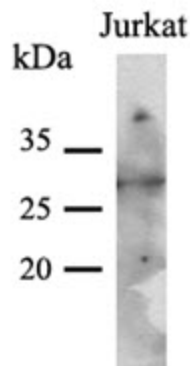
**Protein Families:** Druggable Genome

**Protein Pathways:** Metabolic pathways, Tyrosine metabolism

### Product images:



The cell lysates (40ug) were resolved by SDS-PAGE, transferred to PVDF membrane and probed with anti-human PNMT antibody (1:500). Proteins were visualized using a goat anti-mouse secondary antibody conjugated to HRP and an ECL detection system.



Western blot analysis: The cell lysates (40 ug) were resolved by SDS-PAGE, transferred to PVDF membrane and probed with anti-human PNMT antibody (1:500). Proteins were visualized using a goat anti-mouse secondary antibody conjugated to HRP and an ECL detection system.