

Product datasheet for **AM39000PU-S**

EGFR Mouse Monoclonal Antibody [Clone ID: AT2H8]

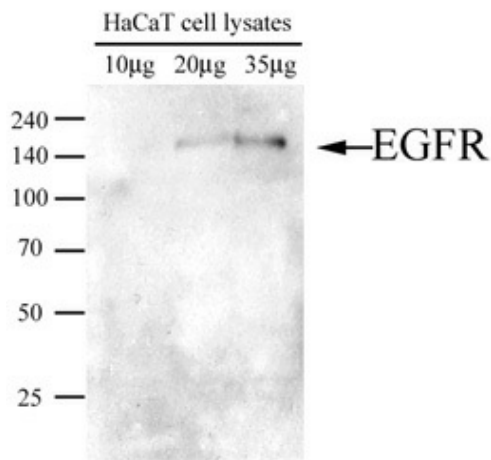
Product data:

Product Type:	Primary Antibodies
Clone Name:	AT2H8
Applications:	ELISA, IF, WB
Recommended Dilution:	ELISA. Western blot: 1/250. Immunofluorescence: 1/250.
Reactivity:	Human
Host:	Mouse
Isotype:	IgG2b
Clonality:	Monoclonal
Immunogen:	Recombinant human EGFR (424-605aa) purified from E. coli
Specificity:	The antibody recognizes Human EGFR. Other species not tested.
Formulation:	PBS, pH 7.4 containing 0.02% Sodium Azide and 10% Glycerol State: Purified State: Liquid purified Ig fraction
Concentration:	lot specific
Purification:	Protein-G affinity chromatography
Conjugation:	Unconjugated
Storage:	Store undiluted at 2-8°C for up to two weeks or (in aliquots) at -20°C for longer. Avoid repeated freezing and thawing.
Stability:	Shelf life: one year from despatch.
Gene Name:	epidermal growth factor receptor
Database Link:	Entrez Gene 1956 Human P00533

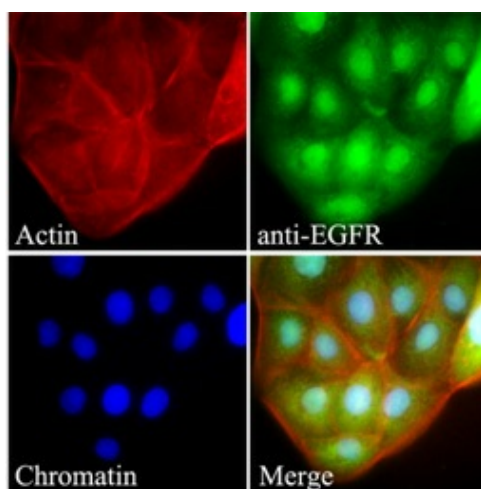


[View online »](#)

- Background:** Epidermal growth factor receptor (EGFR) is a 170 kDa membrane protein first identified as a binding partner of EGF. Also, EGFR phosphorylated itself (autophosphorylation) in response to EGF treatment. The overexpression of EGFR in various epithelial tumors was widely reported and it has been substantiated that deregulation of EGFR itself and its signaling pathways an important role in human cancers.
- Synonyms:** Epidermal growth factor receptor, EGF Receptor, erbB-1, c-ErbB-1
- Protein Families:** Adult stem cells, Cancer stem cells, Druggable Genome, ES Cell Differentiation/IPS, Protein Kinase, Secreted Protein, Stem cell relevant signaling - JAK/STAT signaling pathway, Transmembrane
- Protein Pathways:** Adherens junction, Bladder cancer, Calcium signaling pathway, Colorectal cancer, Cytokine-cytokine receptor interaction, Dorso-ventral axis formation, Endocytosis, Endometrial cancer, Epithelial cell signaling in Helicobacter pylori infection, ErbB signaling pathway, Focal adhesion, Gap junction, Glioma, GnRH signaling pathway, MAPK signaling pathway, Melanoma, Non-small cell lung cancer, Pancreatic cancer, Pathways in cancer, Prostate cancer, Regulation of actin cytoskeleton

Product images:

Western blot analysis : The extracts of HaCaT were resolved by SDS-PAGE, transferred to PVDF membrane and probed with anti-human EGFR (1:250). Proteins were visualized using a goat anti-mouse secondary antibody conjugated to HRP and an ECL detection system.



Immunofluorescence of HaCaT cells stained with Hoechst 3342 (Blue) or phalloidin-TRITC for nucleus or actin staining, respectively. Monoclonal anti-human EGFR antibody (1:250) was stained with alexa 488 (green).