

Product datasheet for **AM33429PU-N**

Hev b3 Mouse Monoclonal Antibody [Clone ID: 10]

Product data:

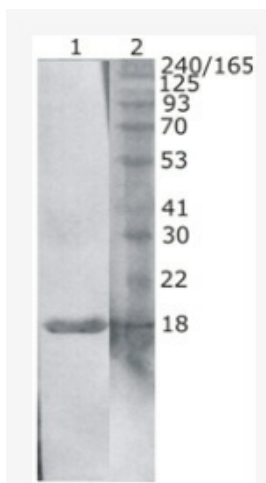
| | |
|-----------------------|--|
| Product Type: | Primary Antibodies |
| Clone Name: | 10 |
| Applications: | ELISA, WB |
| Recommended Dilution: | ELISA: 1/1000. Reacts as Detection antibody in Capture ELISA with Hev b3 binding monoclonal antibody Cat.-No AM33428PU-N. Western Blot: 1/2000. |
| Host: | Mouse |
| Isotype: | IgG1 |
| Clonality: | Monoclonal |
| Immunogen: | Hev b3-MBP fusion protein expressed and purified from <i>E. coli</i> . |
| Specificity: | Recombinant and native Hev b3 (Rubber elongation factor, REF). |
| Formulation: | PBS pH 7.4 State: Aff - Purified State: Liquid purified Ig fraction Preservative: 0.09% Sodium Azide |
| Concentration: | lot specific |
| Purification: | Affinity Chromatography on Protein G |
| Conjugation: | Unconjugated |
| Storage: | Upon receipt, store (in aliquots) at -20°C to -80°C. Avoid repeated freezing and thawing. |
| Stability: | Shelf life: one year from despatch. |
| Database Link: | <u>O82803</u> |
| Background: | Liquid latex from the rubber tree, <i>Hevea brasiliensis</i> , is the source of natural rubber latex (NRL) and contains over 200 proteins; 14 of them have been identified as allergens. Only some allergens retain their allergenic properties through the manufacturing processes. The NRL allergens that have been shown to be clinically relevant to genuine NRL allergy, and present in the final NRL products with maintained allergenicity are Hev b1, Hev b3, Hev b5 and Hev b6.02 |



[View online »](#)

Synonyms: Small rubber particle protein, Latex allergen Hev b 3, SRPP

Product images:



Western Blot testing of natural latex extract using anti-HevB3 antibody (AM33429PU-N, clone 1) Line 1:10 l of 10x diluted natural latex extract were loaded per line. Line 2:Protein size marker