

Product datasheet for **AM33425PU-N**

IL10 Mouse Monoclonal Antibody [Clone ID: 6D2]

Product data:

Product Type:	Primary Antibodies
Clone Name:	6D2
Applications:	ELISA, WB
Recommended Dilution:	Indirect ELISA: The anti-Human IL-10 antibody clone 6D2 reacts with recombinant Human IL-10. Western blot: The anti-Human IL-10 antibody clone 6D2 reacts with recombinant Human IL-10 (Immunogen).
Reactivity:	Human
Host:	Mouse
Isotype:	IgG2b
Clonality:	Monoclonal
Immunogen:	Purified recombinant Human IL-10 (Insight genomics). Fusion Myeloma: F0
Specificity:	This antibody reacts with Human IL-10. Other species not tested.
Formulation:	Lyophilized from a solution in 0.01M PBS, pH 7.0 State: Aff - Purified State: Lyophilized purified IgG fraction
Reconstitution Method:	Restore with doubled distilled water to a concentration of 1.0 mg/ml.
Purification:	Affinity Chromatography on Protein G
Conjugation:	Unconjugated
Storage:	Store lyophilized at 2-8°C for 6 months or at -20°C long term. After reconstitution store the antibody undiluted at 2-8°C for one month or (in aliquots) at -20°C long term. Avoid repeated freezing and thawing.
Stability:	Shelf life: one year from despatch.
Gene Name:	interleukin 10
Database Link:	Entrez Gene 3586 Human P22301



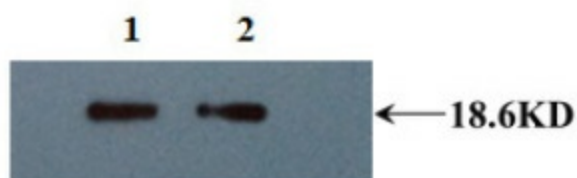
[View online »](#)

Background:

IL-10 is expressed by a variety of cells and plays an important role in inflammatory and immune responses. The biological activities of IL-10 include both immunosuppressive and immunostimulatory effects. It suppresses the production of pro-inflammatory cytokines by monocytes and neutrophils, and down-regulates the expression of activating and co-stimulatory molecules on monocytes and dendritic cells. It stimulates the growth of B cells and mast cells, and inhibits or enhances the activities of T cells depending on their activation conditions. Human IL-10 is a protein with 160 amino acids.

Synonyms:

IL-10, CSIF, TGIF

Product images:

Western blot using Anti-Human IL-10 Antibody clone 6D2 at 1/5,000 dilution. Lane 1&2: Recombinant human protein loaded at 10ng/well.