

## Product datasheet for **AM33424PU-N**

### IL10 Mouse Monoclonal Antibody [Clone ID: 4H2]

#### Product data:

Product Type:	Primary Antibodies
Clone Name:	4H2
Applications:	ELISA, WB
Recommended Dilution:	<b>Indirect ELISA:</b> The anti-Human IL-10 antibody clone 4H2 reacts with recombinant Human IL-10. <b>Western blot:</b> The anti-Human IL-10 antibody clone 4H2 reacts with recombinant Human IL-10 antigen (Immunogen) ( <b>Figure 1</b> ) and with Human IL-10 expressed in 293T cells ( <b>Figure 2</b> ).
Reactivity:	Human
Host:	Mouse
Isotype:	IgG2b
Clonality:	Monoclonal
Immunogen:	Purified recombinant Human IL-10 (Insight genomics). <b>Fusion Myeloma:</b> F0
Specificity:	This antibody reacts with Human IL-10. Other species not tested.
Formulation:	Lyophilized from a solution in 0.01M PBS, pH 7.0 State: Aff - Purified State: Lyophilized purified IgG fraction
Reconstitution Method:	Restore with doubled distilled water to a concentration of 1.0 mg/ml.
Purification:	Affinity Chromatography on Protein G
Conjugation:	Unconjugated
Storage:	Store lyophilized at 2-8°C for 6 months or at -20°C long term. After reconstitution store the antibody undiluted at 2-8°C for one month or (in aliquots) at -20°C long term. Avoid repeated freezing and thawing.
Stability:	Shelf life: one year from despatch.
Gene Name:	interleukin 10
Database Link:	<a href="#">Entrez Gene 3586 Human P22301</a>



[View online »](#)

**Background:**

IL-10 is expressed by a variety of cells and plays an important role in inflammatory and immune responses. The biological activities of IL-10 include both immunosuppressive and immunostimulatory effects. It suppresses the production of pro-inflammatory cytokines by monocytes and neutrophils, and down-regulates the expression of activating and co-stimulatory molecules on monocytes and dendritic cells. It stimulates the growth of B cells and mast cells, and inhibits or enhances the activities of T cells depending on their activation conditions. Human IL-10 is a protein with 160 amino acids.

**Synonyms:**

IL-10, CSIF, TGIF

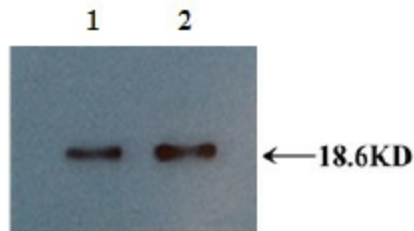
**Product images:**

Figure 1. Lane 1&2: Recombinant human protein loaded at 10ng/well. Anti-Human IL-10 Antibody Clone 4H2 was used at 1/5,000 dilution for Western blot.

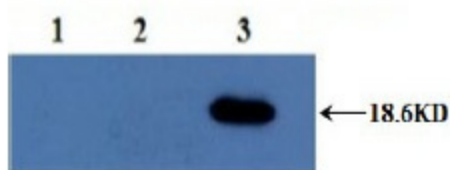


Figure 2. Western blot using Anti-human IL-10 Antibody Clone 4H2 at 1/2,000 dilution. Lane 1: Un-transfected 293T cells. Lane 2: 293T cells transfected with human IL-6 gene. Lane 3: 293T cells transfected with human IL-10 gene.