

Product datasheet for **AM33407PU-N**

Cd40Ig Hamster Monoclonal Antibody [Clone ID: MAB0712]

Product data:

Product Type:	Primary Antibodies
Clone Name:	MAB0712
Applications:	FC, IHC
Recommended Dilution:	Flow Cytometry: 1/100-1/1000. Immunohistochemistry on Paraffin Sections: 1/50-1/300.
Reactivity:	Mouse
Host:	Hamster
Isotype:	IgG2
Clonality:	Monoclonal
Immunogen:	Mouse Th1 cells.
Specificity:	This antibody detects Mouse CD40 Ligand. Other species not tested.
Formulation:	PBS State: Purified State: Lyophilized purified IgG fraction from Culture Supernatant Stabilizer: None
Reconstitution Method:	Restore with 0.4 ml sterile PBS and the final concentration is 0.5 mg/ml.
Purification:	Affinity Chromatography on Protein G
Conjugation:	Unconjugated
Storage:	Store lyophilized at 2-8°C for 6 months or at -20°C long term. After reconstitution store the antibody undiluted at 2-8°C for one month or (in aliquots) at -20°C long term. Avoid repeated freezing and thawing.
Stability:	Shelf life: one year from despatch.
Gene Name:	CD40 ligand
Database Link:	Entrez Gene 21947 Mouse P27548



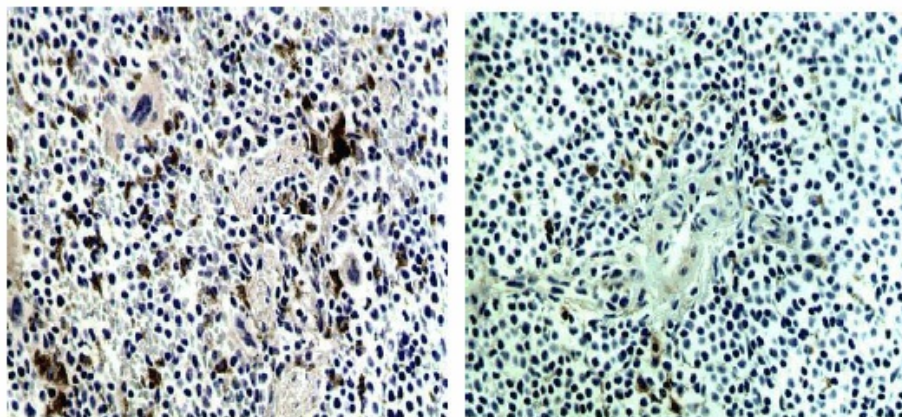
[View online »](#)

Background:

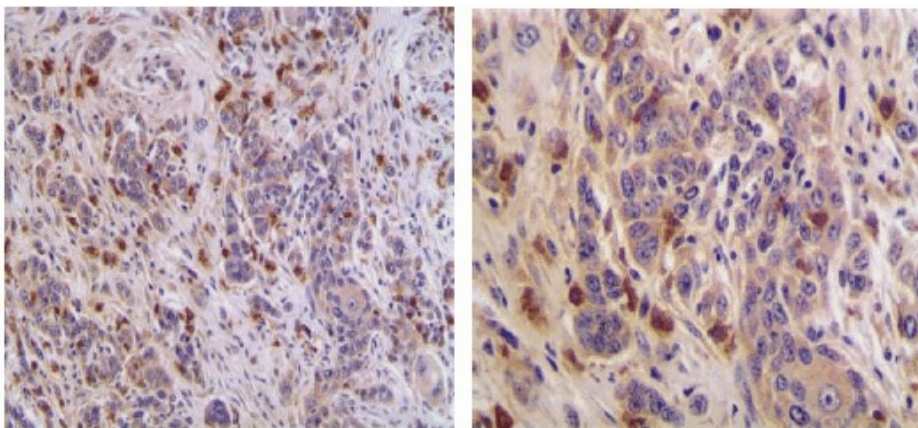
CD40 ligand (CD40L), also known as CD154, TNFSF5, TRAP or gp39, is a 260 amino acid type II transmembrane glycoprotein belonging to the TNF family. Murine CD40L consists of a 22 aa cytoplasmic domain, a 24 aa transmembrane domain, and 214 aa extracellular domain bearing a single glycosylation site. CD40L is expressed predominantly on activated CD4+ T lymphocytes, and also found in other types of cells, including NK cells, mast cells, basophils and eosinophils. Murine CD40L shares 78% amino acid sequence identity with human CD40L. Native bioactive soluble CD40L exists. Soluble human trimeric CD40L secreted by stimulated T cells has been shown to be generated by proteolysis in the microsomes. Both membrane bound and soluble CD40L induce similar effects on B cells.

Synonyms:

CD40 ligand, CD40-L, CD40LG, TNFSF5, TRAP, GP39

Product images:

Formalin fixed and paraffin embedded mouse spleen tissue section was subjected to IHC staining of CD40 Ligand using (Left panel Red Pulp, Right panel: White Pulp).



Formalin fixed and paraffin embedded mouse tumor section was subjected to IHC staining of CD40 Ligand using (Left panel: x 20; Right panel: x 40).