

## Product datasheet for **AM33368PU-T**

### Involucrin (IVL) Mouse Monoclonal Antibody [Clone ID: SY5]

#### Product data:

Product Type:	Primary Antibodies
Clone Name:	SY5
Applications:	ELISA, FC, IF, IHC, IP, WB
Recommended Dilution:	<p><b>ELISA:</b> Use Antibody without BSA for Coating.</p> <p><b>Flow Cytometry:</b> 0.5-1 µg/10<sup>6</sup> cells.</p> <p><b>Immunofluorescence:</b> 1-2 µg/ml.</p> <p><b>Western Blot:</b> 0.5-1 µg/ml.</p> <p><b>Immunoprecipitation:</b> 1-2 µg/500 µg protein lysate.</p> <p><b>Immunohistochemistry on Frozen and Formalin-Fixed Paraffin Sections:</b> 1-2 µg/ml for 30 minutes at RT.</p> <p>Staining of formalin-fixed tissues is ENHANCED by digestion with trypsin (or Protease XXV) at 1mg/ml PBS for 5 min at 37°C.</p> <p><b>Positive Control:</b> MCF-7 cells. Localized to upper spinous and granular layers in normal skin.</p>
Reactivity:	Canine, Gorilla, Human, Monkey, Porcine
Host:	Mouse
Isotype:	IgG1
Clonality:	Monoclonal
Immunogen:	Purified Involucrin from Human keratinocytes.
Specificity:	<p>It recognizes a protein of 66kDa-170kDa, identified as involucrin. In Western blotting of cultured Human keratinocytes, this MAb reacts with a 120kDa protein.</p> <p>It stains the Involucrin in a variety of sizes: 170kDa in MCF-7 cells, a doublet of ~115kDa and 150kDa in Gorilla and owl Monkey, 66kDa in Dog, and a doublet of 105kDa in Pig.</p> <p>Its epitope maps between codon 421-568 of Human Involucrin.</p> <p><b>Cellular Localization:</b> Cytoplasmic.</p>
Formulation:	<p>10mM PBS</p> <p>State: Purified</p> <p>State: Liquid purified IgG fraction from Bioreactor Concentrate</p> <p>Stabilizer: 0.05% BSA</p> <p>Preservative: 0.05% Sodium Azide</p>
Concentration:	lot specific



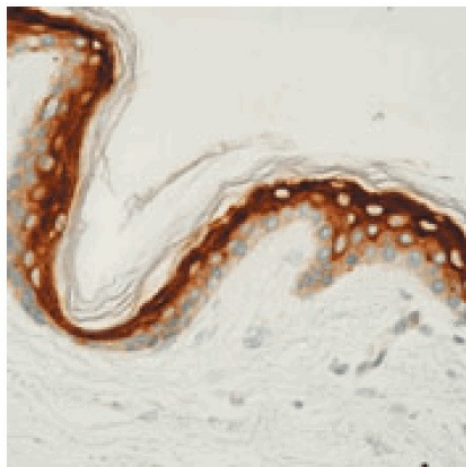
[View online »](#)

<b>Purification:</b>	Protein A/G Chromatography
<b>Conjugation:</b>	Unconjugated
<b>Storage:</b>	Store undiluted at 2-8°C.
<b>Stability:</b>	Shelf life: one year from despatch.
<b>Predicted Protein Size:</b>	66-170 kDa
<b>Gene Name:</b>	involucrin
<b>Database Link:</b>	<a href="#">Entrez Gene 3713 Human P07476</a>

**Background:** Involucrin is expressed in a range of stratified squamous epithelia, including the cornea, which lacks a distinct cornified layer. In normal epidermis, it is first expressed in the upper spinous layers, and in keratinocyte cultures, all cells that have left the basal layer express it. Involucrin expression is altered in pathological conditions: in psoriasis and other benign epidermal hyperplasias, involucrin expression begins closer to the basal layer than normal; expression is abnormal in squamous cell carcinomas and premalignant lesions, and is reduced in severe dysplasias of the larynx and cervix.

**Synonyms:** involucrin

### Product images:



Formalin-Fixed, Paraffin-Embedded Human skin stained with Involucrin Antibody Clone SY5 using peroxidase conjugate and DAB chromogen. Note cytoplasmic staining in the epidermal region.