

## Product datasheet for **AM33365PU-T**

### **Bcl x (BCL2L1) Mouse Monoclonal Antibody [Clone ID: 2H12]**

#### **Product data:**

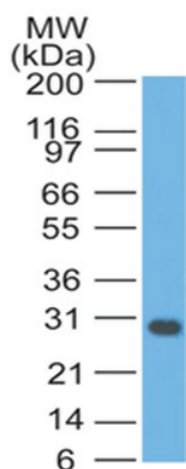
Product Type:	Primary Antibodies
Clone Name:	2H12
Applications:	FC, IF, IHC, IP, WB
Recommended Dilution:	<b>ELISA:</b> Use BSA free Antibody for coating. <b>Flow Cytometry:</b> 0.5-1 µg/million cells. <b>Immunofluorescence:</b> 0.5-1 µg/ml. <b>Western Blotting:</b> 0.5-1 µg/ml. <b>Immunoprecipitation:</b> 0.5-1 µg/500 µg protein lysate. <b>Immunohistochemistry on Frozen and Formalin-Fixed Paraffin Sections:</b> 0.5-1.0 µg/ml for 30 minutes at RT. Staining of formalin-fixed tissues is enhanced by boiling tissue sections in 1mM EDTA Buffer, pH 7.5-8.5, for 10-20 min followed by cooling at RT for 20 minutes. <b>Positive Control:</b> Jurkat, K562, HL-60, or HeLa Cells. Reed-Sternberg cells in Hodgkin's lymphoma.
Reactivity:	Human, Mouse, Porcine, Rat
Host:	Mouse
Isotype:	IgG2a
Clonality:	Monoclonal
Immunogen:	A synthetic peptide, aa 3-14 (Cys-QSNRELVDFLS) of human Bcl-X protein.
Specificity:	Recognizes a protein of 27kDa, identified as the Bcl-X protein. This MAb shows no cross-reaction with Bcl-2a or Bax protein. Bcl-X has two isoforms, Bcl-XL (long), a 241 amino acid protein which suppresses cell death. And Bcl-XS (short), a 178 amino acid protein lacking a 63 amino acid domain which functions as a dominant inhibitor of Bcl-2. This MAb reacts with both Bcl-XS and Bcl-XL proteins. <b>Cellular Localization:</b> Cytoplasmic and cell/nuclear membrane.
Formulation:	10mM PBS State: Purified State: Liquid purified IgG fraction from Bioreactor Concentrate Stabilizer: 0.05% BSA Preservative: 0.05% Sodium Azide



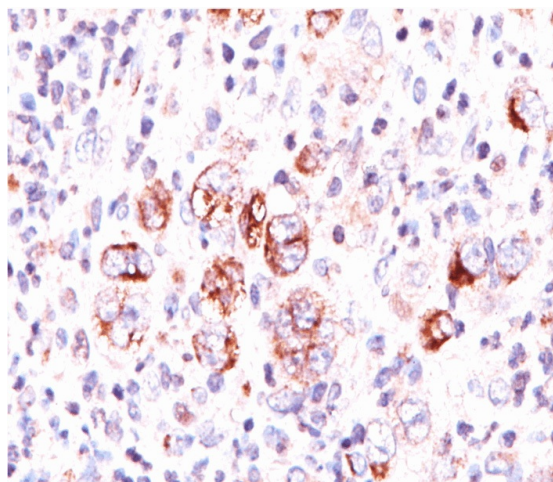
[View online »](#)

Concentration:	lot specific
Purification:	Protein A/G Chromatography
Conjugation:	Unconjugated
Storage:	Store undiluted at 2-8°C.
Stability:	Shelf life: one year from despatch.
Predicted Protein Size:	27 kDa
Gene Name:	BCL2 like 1
Database Link:	<a href="#">Entrez Gene 598 Human Q07817</a>
Synonyms:	Bcl2-L-1, BCL2L1, BCL2L, BCLX, Bcl-x, bcl-xL, bcl-xS, Bcl-2-like protein 1

### Product images:



Western blot analysis of Jurkat Cell lysate using Bcl-X Antibody (Clone 2H12).



Formalin-Paraffin Hodgkin's lymphoma stained with Bcl-X Antibody (Clone 2H12). Note cytoplasmic and membrane staining.