

## Product datasheet for **AM33361PU-S**

### CD1 (CD1A) Mouse Monoclonal Antibody [Clone ID: O10]

#### Product data:

Product Type:	Primary Antibodies
Clone Name:	O10
Applications:	FC, IF, IHC, IP, WB
Recommended Dilution:	<b>ELISA:</b> Use BSA free Antibody for coating. <b>Flow Cytometry:</b> 0.5-1 µg/million cells. <b>Immunofluorescence:</b> 1-2 µg/ml. <b>Immunoprecipitation:</b> 1-2 µg/500 µg protein. <b>Western Blotting:</b> 0.5-1 µg/ml. <b>Immunohistochemistry on Frozen and Formalin-Fixed Paraffin Sections:</b> 0.5-1 µg/ml for 30 min at RT. Staining of formalin-fixed tissues requires boiling tissue sections in 10mM Citrate Buffer, pH 6.0, for 10-20 min followed by cooling at RT for 20 minutes. <b>Positive Control:</b> MOLT-4 cells, Paracortex in a tonsil or a reactive lymph node.
Reactivity:	Human
Host:	Mouse
Isotype:	IgG1
Clonality:	Monoclonal
Immunogen:	Human thymus cells.
Specificity:	Anti-CD1a labels Langerhans cell histiocytosis (Histiocytosis X), extranodal histiocytic sarcoma, a subset of T-lymphoblastic lymphoma/leukemia, and interdigitating dendritic cell sarcoma of the lymph node. When combined with antibodies against TTF-1 and CD5, anti-CD1a is useful in distinguishing between pulmonary and thymic neoplasms since CD1a is consistently expressed in thymic lymphocytes in both typical and atypical thymomas, but only focally in 1/6 of thymic carcinomas and not in lymphocytes in pulmonary neoplasms. Anti-CD1a is reported to be a new marker for perivascular epithelial cell tumor. <b>Cellular Localization:</b> Cell surface.



[View online »](#)

**Formulation:** 10mM PBS  
State: Purified  
State: Liquid purified IgG fraction from Bioreactor Concentrate  
Stabilizer: 0.05% BSA  
Preservative: 0.05% Sodium Azide

**Concentration:** lot specific

**Purification:** Protein A/G Chromatography

**Conjugation:** Unconjugated

**Storage:** Store undiluted at 2-8°C.

**Stability:** Shelf life: one year from despatch.

**Predicted Protein Size:** 49 kDa

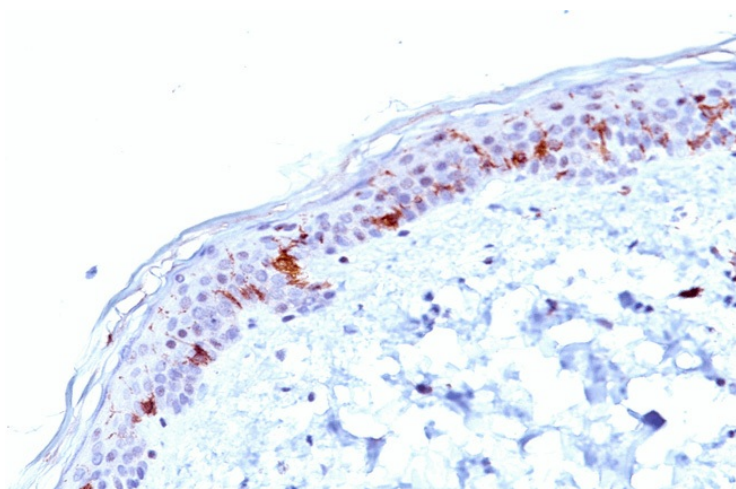
**Gene Name:** CD1a molecule

**Database Link:** [Entrez Gene 909 Human P06126](#)

**Background:** At least five CD1 genes (CD1a, b, c, d, and e) are identified. CD1 proteins have been demonstrated to restrict T cell response to non-peptide lipid and glycolipid antigens and play a role in non-classical antigen presentation. CD1a is a non-polymorphic MHC Class 1 related cell surface glycoprotein, expressed in association with Beta-2 microglobulin.

**Synonyms:** T6/Leu-6, hTa1

### Product images:



Formalin-Paraffin Human skin stained with CD1a Antibody (Clone O10).