

Product datasheet for **AM33331PU-T**

Myeloid specific antigen (Myeloid Cell Marker) Mouse Monoclonal Antibody [Clone ID: BM-1]

Product data:

Product Type: Primary Antibodies

Clone Name: BM-1

Applications: FC, IF, IHC

Recommended Dilution: **Flow Cytometry:** 0.5-1 µg/million cells.

Immunofluorescence: 1-2 µg/ml.

Immunohistochemistry on Frozen Sections: 0.5-1 µg/ml.

and Formalin-Fixed Paraffin Sections: 0.5-1 µg/ml.

Incubation Time: 30 minutes at RT.

No special pretreatment is required for staining of formalin/paraffin tissues.

Positive Control: Bone marrow, lymph node or tonsil.

Reactivity: Human

Host: Mouse

Isotype: IgG1

Clonality: Monoclonal

Immunogen: Human peripheral blood mononuclear cells.

Specificity: Recognizes 183kDa protein with DNA-binding characteristics, which is identified as a myeloid specific antigen. BM-1 reacts with myeloid precursor cells and granulocytes in bone marrow. Its antigen appears to be restricted to M2 and M3 acute myelogenous leukemia (AML) subtypes. Markers of myeloid cells are useful in the identification of different levels of cellular differentiation. BM-1 and BM-2 antibodies react with early precursor and mature forms of human myeloid cells.

BM-1 Monoclonal Antibody is useful in the identification of myelogenous leukemias, distinguishing granulocytic sarcomas from lymphoid malignancies and also in the study of differentiation and transformation of human myeloid cells. The biological function of this antigen is not clear, although it has been proposed that BM-1 may play a role in the differentiation of myeloid cells.

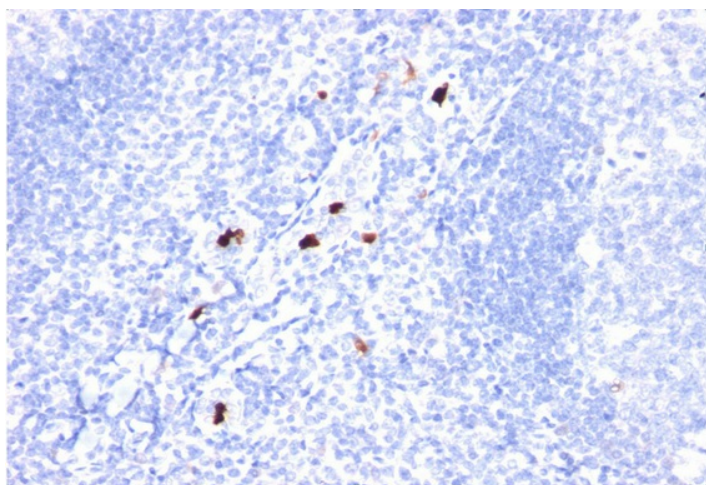
Cellular Localization: Cytoplasmic and Nuclear.



[View online »](#)

Formulation:	10mM PBS State: Purified State: Liquid purified IgG fraction from Bioreactor Concentrate Stabilizer: 0.05% BSA Preservative: 0.05% Sodium Azide
Concentration:	lot specific
Purification:	Protein A/G Chromatography
Conjugation:	Unconjugated
Storage:	Store undiluted at 2-8°C.
Stability:	Shelf life: one year from despatch.
Predicted Protein Size:	183 kDa
Background:	BM-1 antigen is a 183 kD myeloid-specific-DNA-binding protein which is expressed in myeloid cells, including myeloid precursors and mature granulocytes. It is also expressed in chronic myeloid leukemia (CML) and M2 and M3 acute myeloid leukemias (AML) as well as myelomonocytic leukemias, but not in T, B, NK and other non-hematopoietic cells. The biological function of this antigen is not clear, although it has been proposed that BM-1 may play a role in the differentiation of myeloid cells.

Product images:



Formalin-Fixed, Paraffin-Embedded tonsil stained with Myeloid specific Antibody Cat.-No AM33331PU (Clone BM-1).